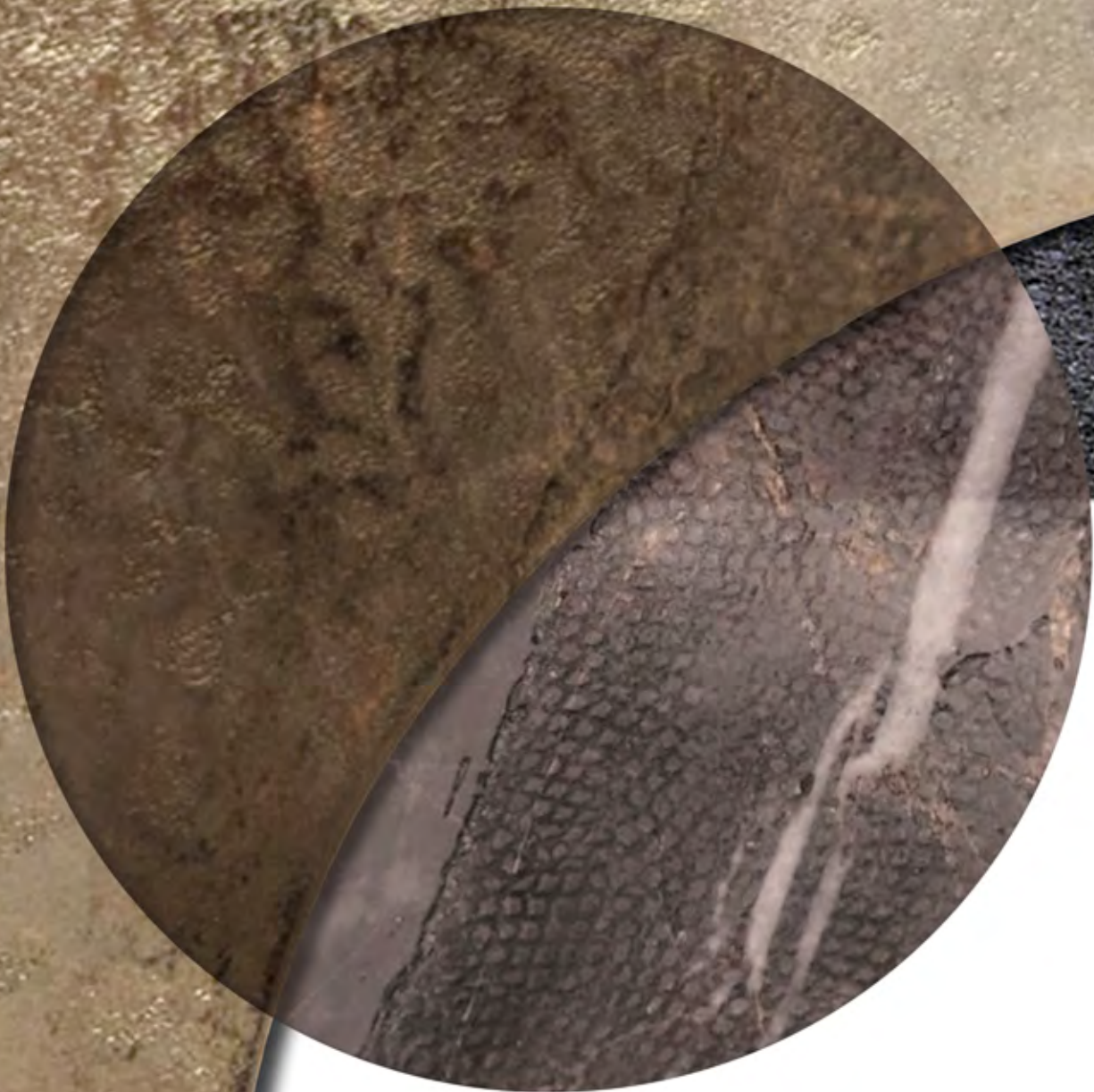


HOME PHILOSOPHY
visionnaire

B E A U T Y



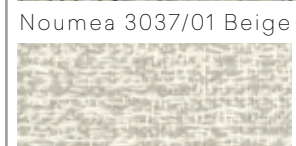
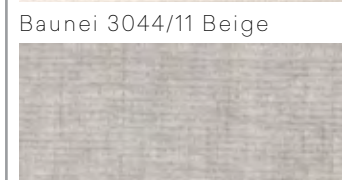
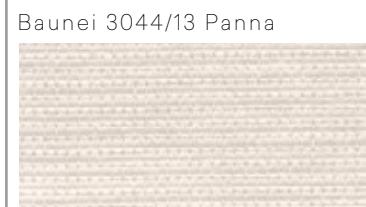
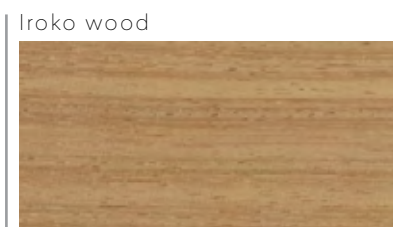
GALLOWAY FREESTYLE

GALLOWAY FREESTYLE

design Roberto Tapinassi - Maurizio Manzoni

sofa - chaise-longue
280x104 H.63 cm - 165x104 H.63 cm

Structure in Iroko solid wood. Back with loose cushions. Upholstery in fabric Baunei 3044/13 Panna and Baunei 3044/11 Beige with water-resistant treatment. Removable upholstery. Loose cushions 50x50 cm in fabric Dominica 3038/01 Naturale and in fabric Noumea 3037/01 Beige. Base and plate on the armrest in polished aluminium treated with two layers of protective transparent lacquer, polished chrome finish and Visionnaire logo in engraved curved brass with chromed finish.

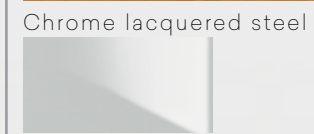
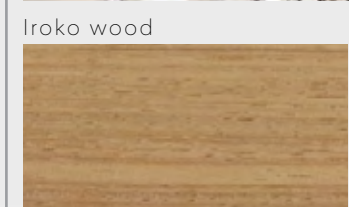


GALLOWAY

design Roberto Tapinassi - Maurizio Manzoni

low table
160x80 H.35 cm

Low table in Iroko solid wood and top in marble Dover White. Magazine holder shelf in smoked glass. Metal parts in polished chromed steel.



KATHRYN

sofa

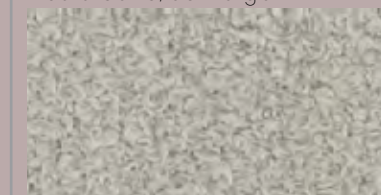
KATHRYN

design Giuseppe Viganò

sofa
210x105 H.70 cm

Outdoor sofa, base covered in Teak wood. Seat cushion upholstered in outdoor fabric Koala 3043/03 Beige. Back cushion upholstered in outdoor fabric Moorea 3041/10 Prugna. Curved backrest with brass and steel structure, interwoven ropes in linen and solid teak sticks. Decorative logo on armrests with leather tassels in Soft 1118 Canapa and brass. Metal parts in steel with polished gold-lacquered finish.

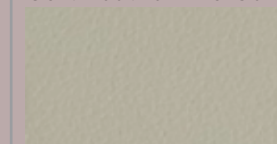
Koala 3043/03 Beige



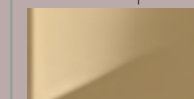
Moorea 3041/10 Prugna



Soft Leather 1118 Canapa



Gold lacquered steel



KATHRYN
design Giuseppe Viganò

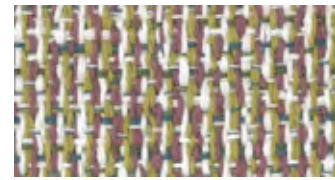
armchair
74x73 H.64 cm

Base covered in Teak wood. Seat cushion upholstered in outdoor fabric Sunrise 3040/07 Oltremare. Back cushion upholstered in outdoor fabric Hawaii 3042/07 Prugna. Curved backrest with brass and steel structure, interwoven ropes in linen and solid teak sticks. Decorative logo on armrests with leather tassels in Soft 1118 Canapa and brass. Metal parts in steel with polished gold-lacquered finish.

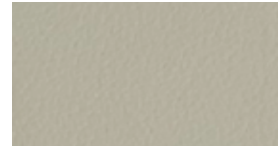
Sunrise 3040/07 Oltremare



Hawaii 3042/07 Prugna



Soft Leather 1118 Canapa



Gold lacquered steel



KATHRYN
design Giuseppe Viganò

pouf
70x58 H.41 cm

Outdoor pouf, base covered in teak. Seat cushion upholstered in fabric Rapallo 3014/108 Cenere. Metal parts in polished gold-lacquered steel.

KATHRYN
design Giuseppe Viganò

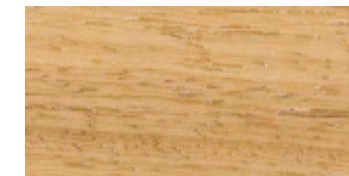
floor lamp
60x64 H.62 cm

Floor lamp for outdoor, structure covered in teak containing a circular light in polythene. Tassel in leather Soft 1118 Canapa. Metal parts in polished gold steel.

B R E E Z E
low table



Iroko wood



Gold lacquered steel



B R E E Z E
design Roberto Tapinassi - Maurizio Manzoni

low table
Ø60x66 H.40 cm - Ø50x56 H.50 cm
Ø40x46 H.60 cm

Table with 3 feet in Iroko solid wood with mat natural finish. Metal parts in brass with polished gold-lacquered finish. Top in double-sided laminated glass with digital print. Prints available: Black Coleottero with silver leaf (top Ø60 cm), Colibrì with gold leaf (top Ø50 cm), Cervo Volante with silver leaf (top Ø40 cm).

STANKAR

STANKAR design La Conca

Sofa - armchair - rocking armchair
223x95 H.73 cm - 96x95 H.73 cm
96x105 H. cm

Outdoor sofa and armchair with seat and back cushions upholstered in fabric Sunrise 3040/02 Aragosta. Armrest cushion 40x40 cm upholstered in Hawaii 3042/02 Ruggine. Frame in metal interwoven with rope in natural canvas and lurex threads. Rocking armchair upholstered in fabric Koala 3043/02 Avorio, armrest cushion 40x40 cm in fabric Koala 3043/02 Avorio. Frame in metal interwoven with rope in natural canvas and lurex threads.

Rocking armchair upholstered in fabric Koala 3043/02 Avorio, armrest cushion 40x40 cm in fabric Koala 3043/02 Avorio. Frame in metal interwoven with rope in natural canvas and lurex threads.

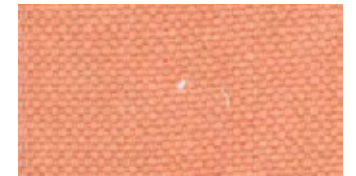
Stankar collection offers seats for outdoor (sofa, armchair, rocking armchair) with soft lines designed by a metal frame interwoven with a hemp rope, enriched with gold and silver lurex threads. The large volumes combined with the interwoven pattern convey lightness and harmony to the design of of this collection. These features are further enhanced by the decorative metal details in stainless steel. Metal components, padding and upholstery undergo a protective treatment which allows their use in both indoor and outdoor locations.

STANKAR design La Conca

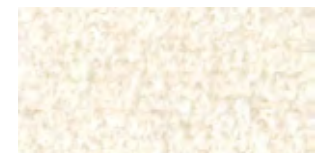
low table
Ø90 H.36 cm

Shaped top in volcanic stone. Structure in metal interwoven with ropes in natural canvas and lurex threads.

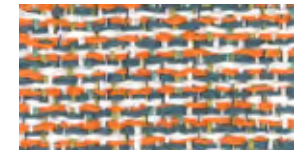
Sunrise 3040/02 Aragosta



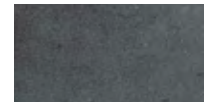
Koala 3043/02 Avorio



Hawaii 3042/02 Ruggine



Lava stone



FARNESE

daybed

Daybed entirely made in wicker for covered outdoor locations. Perimetral structure in interwoven natural wicker with oval pattern creating an all-over texture, decorated by small steel clips. The comfortable mattress matches large back cushions. Optional folding roof available.



FARNESE

design La Conca

daybed
193x145 H.126 cm

Structure in black wicker colour 110 with ovals in colour Nocciola Tiglio 102. Roof covered in fabric Sunrise 3040/06 Denim. Big seat cushion upholstered in fabric Sunrise 3040/10 Madreperla. Metal clips in natural aluminium. Metal details with polished gold lacquered finish.



FARNESE
design Samuele Mazza

armchair
78x81 H.76/90 cm

Structure in black wicker colour 110 with ovals in colour Nocciola Tiglio 102. Seat cushion upholstered in fabric Koala 3043/05 Cobalto. Piping in fabric Sunrise 3040/10 Madreperla. Metal clips in natural aluminium. Metal parts with polished gold-lacquered finish.

Koala 3043/05 Cobalto



Sunrise 3040/10 Madreperla



Gold lacquered steel



OBERTO
low table



OBERTO
design Samuele Mazza

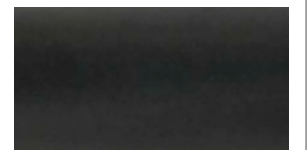
low table
Ø126 H.42 cm

Structure in black wicker colour 110 with ovals in colour Nocciola Tiglio 102 with bands in calf leather and metal clips in natural aluminium. Top in marble Dover White. Metal details with polished gold-lacquered finish.

Dover White marble



Black rattan



Gold lacquered steel



A M I N T A
chair



A M I N T A
design Giuseppe Viganò

outdoor chair
58x55 H.72 cm

Main frame and tubular legs in powder coated steel YW360F Nero Sablè. Seat in fabric Lipari 3026/14 Avorio, back cushion in fabric Erice 3025/58 Arancio/Lino.

Lipari 3026/14 Avorio



Erice 3025/58 Arancio/Lino



YW360F Nero sablè steel



01. GALLOWAY FREESTYLE

Divano 280x104 H.63 cm. Struttura in legno di iroko massello. Schienale con cuscini volanti. Rivestimento in tessuto Baunei 3044/13 Panna e Baunei 3044/11 Beige con trattamento idrorepellente. Rivestimento sfoderabile. Cuscini volanti 50x50 cm in tessuto Dominica 3038/01 Naturale e Noumea 3037/01 Beige. Base e mostrina del bracciolo in alluminio lucidato e protetto con doppio strato di vernice trasparente, in finitura Cromo lucido e logo Visionnaire in ottone inciso e curvato con finitura cromo.

Sofa 280x104 H.63 cm. Structure in Iroko solid wood. Back with loose cushions. Upholstery in fabric Baunei 3044/13 Panna and Baunei 3044/11 Beige with water-resistant treatment. Removable upholstery. Loose cushions 50x50 cm in fabric Dominica 3038/01 Naturale and in fabric Noumea 3037/01 Beige. Base and plate on the armrest in polished aluminium treated with two layers of protective transparent lacquer, polished chrome finish and Visionnaire logo in engraved curved brass with chromed finish.

02. GALLOWAY FREESTYLE

Chaise-longue 165x104 H.63 cm. Struttura in legno di iroko massello. Schienale con cuscini volanti. Rivestimento in tessuto Baunei 3044/13 Panna e Baunei 3044/11 Beige con trattamento idrorepellente. Rivestimento sfoderabile. Cuscini volanti 50x50 cm in tessuto Dominica 3038/01 Naturale e Noumea 3037/01 Beige. Base e mostrina del bracciolo in alluminio lucidato e protetto con doppio strato di vernice trasparente, in finitura Cromo lucido e logo Visionnaire in ottone inciso e curvato con finitura cromo

Chaise-longue 165x104 H.63 cm. Structure in Iroko solid wood. Back with loose cushions. Upholstery in fabric Baunei 3044/13 Panna and Baunei 3044/11 Beige with water-resistant treatment. Removable upholstery. Loose cushions 50x50 cm in fabric Dominica 3038/01 Naturale and in fabric Noumea 3037/01 Beige. Base and plate on the armrest in polished aluminium treated with two layers of protective transparent lacquer, polished chrome finish and Visionnaire logo in engraved curved brass with chromed finish.

03. GALLOWAY

Tavolo basso 160x80 H.35 cm. Tavolo basso in legno di iroko massello e top in marmo. Dower White. Ripiano portariviste in vetro fumé. Parti metalliche in acciaio inox in finitura Cromo lucido.

Low table 160x80 H.35 cm. Low table in Iroko solid wood and top in marble Dover White. Magazine holder shelf in smoked glass. Metal parts in polished chromed steel.

04. KATHRYN

Divano 210x105 H.70 cm. Divano outdoor, struttura di base rivestita in teak. Cuscino di seduta rivestito in tessuto da esterno Koala 3043/03 Beige. Cuscino schienale rivestito in tessuto da esterno Moorea 3041/10 Prugna. Schienale curvo formato da struttura in ottone e acciaio inox, intrecciata in corda di lino e bacchette di teak massello. Stemma decorativo sui braccioli con nappe in pelle Soft Leather 1118 Canapa e ottone. Parti metalliche in acciaio, finitura oro lucido.

Sofa 210x105 H.70 cm. Outdoor sofa, base covered in Teak wood. Seat cushion upholstered in outdoor fabric Koala 3043/03 Beige. Back cushion upholstered in outdoor fabric Moorea 3041/10 Prugna. Curved backrest with brass and steel structure, interwoven ropes in linen and solid teak sticks. Decorative logo on armrests with leather tassels in Soft 1118 Canapa and brass. Metal parts in steel with polished gold-lacquered finish.

05. KATHRYN

Poltrona 74x73 H.64 cm. Struttura di base rivestita in teak. Cuscino di seduta rivestito in tessuto da esterno Sunrise 3040/07 Oltremare. Cuscino schienale rivestito in tessuto da esterno Hawaii 3042/07 Prugna. Schienale curvo formato da struttura in ottone e acciaio inox, intrecciata in corda di lino e bacchette di teak massello. Stemma decorativo sui braccioli con nappe in pelle Soft Leather 1118 Canapa e ottone. Parti metalliche in acciaio, finitura oro lucido.

Armchair 74x73 H.64 cm. Base covered in Teak wood. Seat cushion upholstered in outdoor fabric Sunrise 3040/07 Oltremare. Back cushion upholstered in outdoor fabric Hawaii 3042/07 Prugna. Curved backrest with brass and steel structure, interwoven ropes in linen and solid teak sticks. Decorative logo on armrests with leather tassels in Soft 1118 Canapa and brass. Metal parts in steel with polished gold-lacquered finish.

06. KATHRYN

Pouf 70x58 H.41 cm. Pouf outdoor, struttura di base rivestita in teak. Cuscino di seduta rivestito in tessuto Rapallo 3014/108 Cenere. Parti metalliche in acciaio, finitura oro lucido.

Pouf 70x58 H.41 cm. Outdoor pouf, base covered in teak. Seat cushion upholstered in fabric Rapallo 3014/108 Cenere. Metal parts in polished gold-lacquered steel.

07. KATHRYN

Lampada da terra 60x64 H.62 cm. Lampada da terra outdoor, struttura rivestita in teak contenente una sfera luminosa in polietilene. Nappa decorativa in pelle Soft Leather 1118 Canapa. Parti metalliche in acciaio, finitura oro lucido.

Floor lamp 60x64 H.62 cm. Floor lamp for outdoor, structure covered in teak containing a circular light in polythene. Tassel in leather Soft 1118 Canapa. Metal parts in polished gold steel.

08. BREEZE

Tavoli bassi Ø60x66 H.40 cm - Ø50x56 H.50 cm - Ø40x46 H.60 cm. Tavolini a tre piedi in legno di iroko massello in finitura naturale opaca. Parti metalliche in ottone in acciaio in finitura Oro lucido. Top in vetro stratificato double-face con stampa digitale. Gli accoppiamenti disponibili sono: Coleottero nero e foglia argento (top da Ø60 cm), colibrì e foglia argento (top da Ø50 cm), cervo volante e foglia argento, (top da Ø40 cm).

Low tables Table with 3 feet in Iroko solid wood with mat natural finish. Metal parts in brass with polished gold-lacquered finish. Top in double-sided laminated glass with digital print. Prints available: Black Coleottero with silver leaf (top Ø60 cm), Colibrì with gold leaf (top Ø50 cm), Cervo Volante with silver leaf (top Ø40 cm).

09. STANKAR

Divano 223x95 H.73 cm. Rivestimento seduta e cuscino schienale in tessuto Sunrise 3040/02 Aragosta. Cuscino "bracciolo" 40x40 cm rivestito in tessuto Hawaii 3042/02 Ruggine. Telaio in metallo intrecciato con corda in canapa naturale e fili in lurex.

Sofa 223x95 H.73 cm. Outdoor sofa with seat and back cushions upholstered in fabric Sunrise 3040/02 Aragosta. Armrest cushion 40x40 cm upholstered in Hawaii 3042/02 Ruggine. Frame in metal interwoven with rope in natural canvas and lurex threads.

10. STANKAR

Poltrona 96x95 H.73 cm. Rivestimento seduta e cuscino schienale in tessuto Sunrise 3040/02 Aragosta. Cuscino "bracciolo" 40x40 cm rivestito in tessuto Hawaii 3042/02 Ruggine. Telaio in metallo intrecciato con corda in canapa naturale e fili in lurex.

Armchair 96x95 H.73 cm. Outdoor armchair with seat and back cushions upholstered in fabric Sunrise 3040/02 Aragosta. Armrest cushion 40x40 cm upholstered in Hawaii 3042/02 Ruggine. Frame in metal interwoven with rope in natural canvas and lurex threads.

11. STANKAR

Poltrona a dondolo 96x105 H.73 cm. rivestimento seduta e cuscino schienale in tessuto Sunrise 3040/02 Aragosta. Cuscino "bracciolo" 40x40 cm rivestito in tessuto Hawaii 3042/02 Ruggine. Telaio in metallo intrecciato con corda in canapa naturale e fili in lurex.

Rocking armchair 96x105 H.73 cm. upholstered in fabric Koala 3043/02 Avorio, armrest cushion 40x40 cm in fabric Koala 3043/02 Avorio. Frame in metal interwoven with rope in natural canvas and lurex threads.

12. STANKAR

Tavolo basso 350x250 cm. Ø90 H.36 cm. Top sagomato in pietra lavica. Struttura in metallo intrecciato con corda in canapa naturale e fili in lurex.

Low table 350x250 Shaped top in volcanic stone. Structure in metal interwoven with ropes in natural canvas and lurex threads.

13. FARNESE

Daybed 193x145 H.126 cm. Struttura in Rattan nero 110 con ovali Nocciola tiglio 102. Tettuccio rivestito in tessuto Sunrise 3040/06 Denim. Cuscino grande di seduta rivestito in tessuto Sunrise 3040/10 Madreperla. Clips metallici in alluminio naturale. Particolari metallici in finitura oro lucido.

Daybed 193x145 H.126 cm. Structure in black wicker colour 110 with ovals in colour Nocciola Tiglio 102. Roof covered in fabric Sunrise 3040/06 Denim. Big seat cushion upholstered in fabric Sunrise 3040/10 Madreperla. Metal clips in natural aluminium. Metal details with polished gold lacquered finish.

14. FARNESE

Poltrona 78x81 H.76/90 cm. Struttura in Rattan nero 110 con ovali Nocciola tiglio 102. Cuscino di seduta rivestito in tessuto Koala 3043/05 Cobalto. Filetti in tessuto Sunrise 3040/10 Madreperla. Clips metallici in alluminio naturale. Particolari metallici in finitura oro lucido.

Armchair 78x81 H.76/90 cm. Structure in black wicker colour 110 with ovals in colour Nocciola Tiglio 102. Seat cushion upholstered in fabric Koala 3043/05 Cobalto. Piping in fabric Sunrise 3040/10 Madreperla. Metal clips in natural aluminium. Metal parts with polished gold-lacquered finish.

15. OBERTO

Tavolo basso Ø126 H.42 cm. Struttura in Rattan nero 110 con ovali Nocciola tiglio 102 con legature in cuoio e fascette metalliche in alluminio naturale. Top in marmo Dover White. Particolari in finitura Oro lucido.

Low table Ø126 H.42 cm. Structure in black wicker colour 110 with ovals in colour Nocciola Tiglio 102 with bands in calf leather and metal clips in natural aluminium. Top in marble Dover White. Metal details with polished gold-lacquered finish.

16. AMINTA

Sedia outdoor 58x55 H.72 cm. Telaio principale e gambe in tubo conficcato in acciaio verniciato a polveri Nero Sablè YW360F. Seduta rivestita in tessuto Lipari 3026/14 Avorio, cuscino di schienale in tessuto Erice 3025/58 Arancio/Lino.

Outdoor armchair 58x55 H.72 cm. Main frame and tubular legs in powder coated steel YW360F Nero Sablè. Seat in fabric Lipari 3026/14 Avorio, back cushion in fabric Erice 3025/58 Arancio/Lino.

Produced by
©IPE SRL
ALL RIGHTS RESERVED

*Visionnaire Logo, catalogue and advertising images are sole propriety of IPE srl, henceforth any use of the logo or adaptation of images is strictly forbidden without IPE srl prior approval; nonetheless, in any case the images must be used in such a way that there is no reasonable doubt that those belong to IPE srl and refer to IPE srl products.
No part of this publication can be reproduced or transmitted in any form or by any means, both electronic or mechanical, including photocopying and recording, or via any information storage and retrieval system, without written permission of the publisher.*

Art Director: Eleonore Cavalli



Tutti i colori dei rivestimenti, pelli e tessuti, delle lacche, dei vetri, dei marmi e dei tappeti non possono essere considerati come riferimento colore. Le misure dei prodotti possono subire delle modifiche rispetto alle indicazioni del catalogo.

All colors of leather or fabric's covers, lacquered wood, mirrors, marbles and carpets can't be considered as color references. The dimensions of products are subject to change according to the instructions of the catalog.

I.P.E. S.r.l.
Via Mattei 1 — 40069 Zola Predosa (Bo) Italy
tel. +39 051 6186311 — fax +39 051 6186310
www.ipe-cavalli.it
www.visionnaire-home.it
ipe@ipe.it



