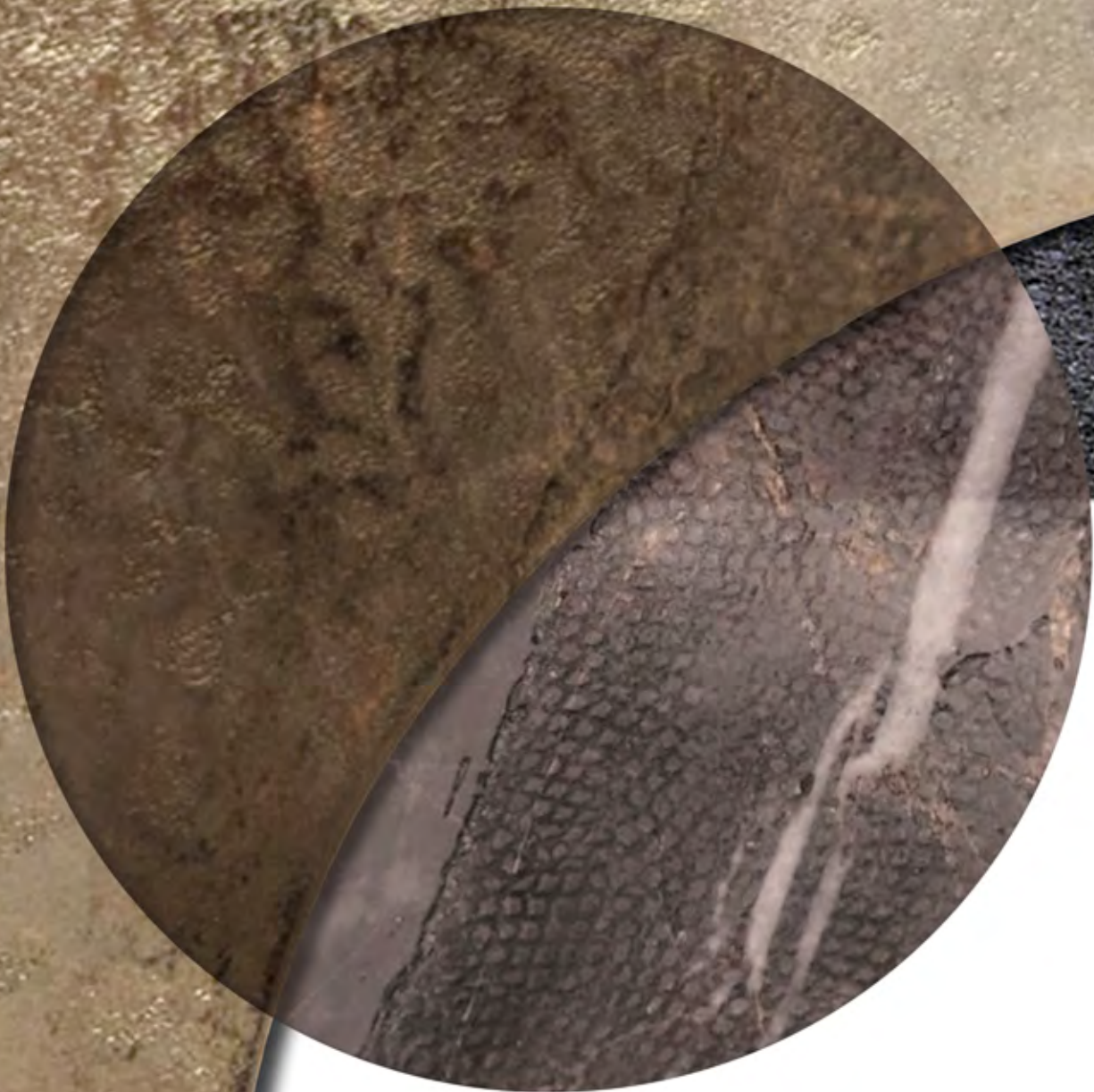


HOME PHILOSOPHY
visionnaire

BEAUTY





MILLER LIVING ROOM



MILLER LIVING ROOM



MILLER LIVING ROOM



MILLER LIVING ROOM



M I L L E R
sofa



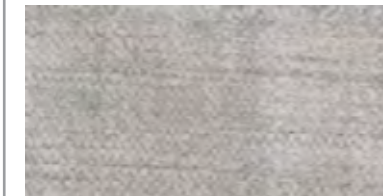
M I L L E R
design Fabio Bonfa

sofa
276x105 H.85 cm.

Sofa upholstered in fabric Vegas 24316/16 Platino. Back cushions upholstered in velvet Vermeer 24175/17 Ardesia with cannetté quilting. Loose cushions 35x35 cm in velvet Vermeer 24175/111 Peltro. Steel profile with satinized Siena lacquered finish.

Sofa upholstered in leather or fabric. Base composed by a wooden frame equipped with elastic-belt spring system. Seat cushion in polyurethane foam with different densities, Memory Foam® and feather. Back in curved wood covered in leather or fabric decorated with "cannetté" quilted motif. Loose cushions in feather. Base profile available with polished chrome, gold or satin siena finish.

Vegas 24316/16 Platino



Vermeer 24175/17 Ardesia



Gold lacquered steel



MILLER
design Fabio Bonfa

sofa
276x105 H.85 cm.

Sofa upholstered in fabric Vegas 24316/16 Platino. Back cushions upholstered in velvet Vermeer 24175/17 Ardesia with cannetté quilting. Loose cushions 35x35 cm in velvet Vermeer 24175/111 Peltro. Steel profile with satinized Siena lacquered finish.

MILLER

modular sofa

Sofa upholstered in leather or fabric, with frame in solid wood equipped with elastic-belt spring system. Seat cushions in polyurethane foam with different densities, Memory Foam® and feather. Back cushions in polyurethane and feather, including headrest roll. Sides and back externally upholstered in leather or fabric, decorated with "cannetté" quilted motif. Loose cushions in feather. Modular sofa: central, corner and lateral elements available. Base profile in aluminium available with polished chrome, gold or satin siena finish.



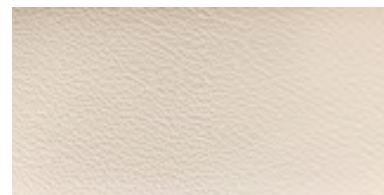
MILLER

design Fabio Bonfà

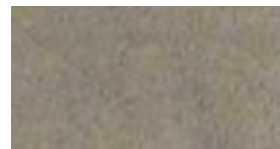
modular sofa
384x354 H.80 cm

Sofa upholstered in leather Chamolè 24331/01 Avorio. Back cushions upholstered in fabric Faber 24229/35 with cannetté quilting. Loose cushions 35x35 cm in velvet Vermeer 24175/17 Ardesia and 40x40 cm in fabric Orangerie 24317/685 Cielo-Sabbia. Steel profile with satinized Siena lacquered finish.

Chamolè 24331/01 Avorio



Faber 24229/35 Platino

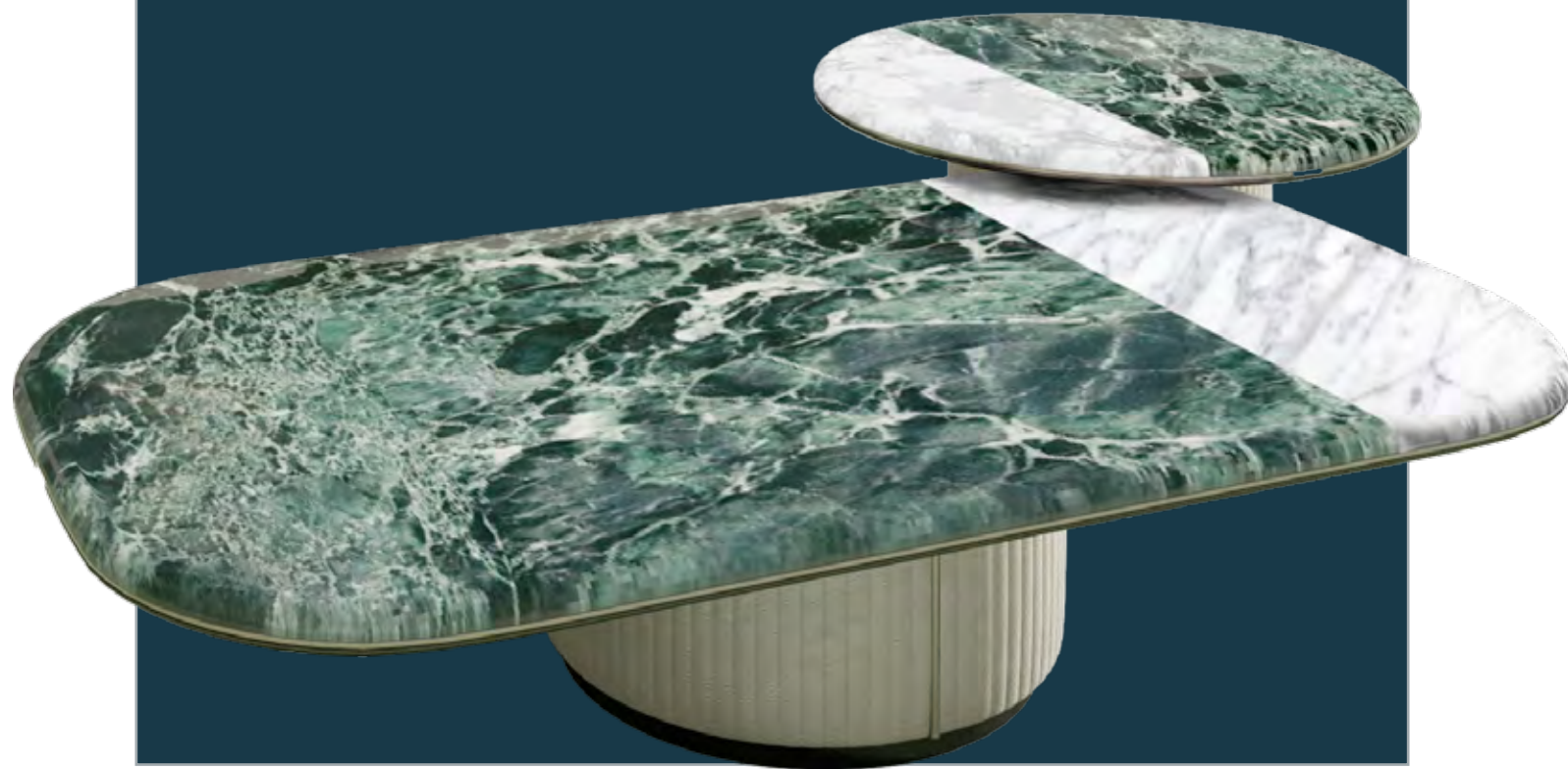


Siena satinized steel



MILLER
low table

Low table with top in bicolour marble and rounded corner. Base in wood upholstered in leather or fabric decorated with cannetté quilted motif.



MILLER
design Fabio Bonfa

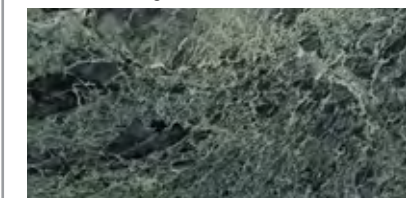
low table
140x80 H.31 cm
Ø75 H.37 cm

Shaped top in marble Calacatta and marble Green Saint Denis. Structure in wood upholstered in fabric Faber 24229/35 Platino with cannetté quilting. Under-top and plinth lacquered in mat black. Profile in steel with satin Siena-lacquered finish. Buckle with logo and metal details finished with satin Siena-lacquered finish.

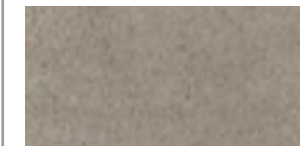
Calacatta marble



Saint Denis green marble



Faber 24229/35 Platino



Siena satinized steel



W H I T N E Y

armchair

Whitney armchair combines smooth and dynamic design of its upper structure with the light lines of seat, suspended onto a curved base in laser-cut stainless steel which guarantees the necessary stability despite its reduced thickness. The bicolour structure is covered with a cannetté-quilted upholstery frontally, and a plain internal upholstery with pleat-quilting decoration on the internal sides.



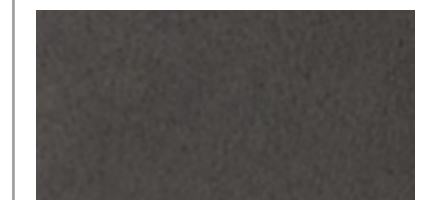
W H I T N E Y

design Fabio Bonfà

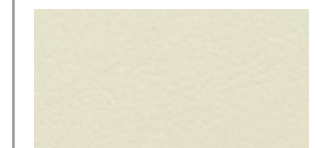
armchair
93x91 H.78 cm

External structure with cannetté quilting upholstered in fabric Faber 24229/14 Testa di Moro. Seat upholstered in leather Soft 1151 Latte. Base in steel with satin black nickel-lacquered finish.

Faber 24229/14 Testa di Moro



Soft Leather 1151 Latte



Black Nickel satinized steel



Rain Forest marble



Black Nickel satinized steel



MONDRIAN
design Fabio bonfà

console
180x42 H.92 cm

Structure in steel with satin black nickel-lacquered finished. Top and side in marble Rainforest - Texture 3 - Linfa. Top and lower shelf in smoked laminated glass. Chest of drawers with fronts lacquered shiny NCS S 8502Y.



MONDRIAN
console

Concerning the use of marble, the biggest novelty regards the new techniques employed in its working, which allows to obtain results of artistic relevance while enhancing the natural veins of the marble. Mondrian console shows a top in marble Rainforest decorated with "Linfa" Texture 3 finish, hand-crafted in micro relief; this unique engraving exalts the natural veins of the marble, stressing the uniqueness of each slab and giving an organic appearance to this inanimate material. This technique combines the most recent technologies employed in the field of numeric control with the hand finishing skills, thus ensuring the highest precision in the crafting of details, while highlighting the natural features of the material.

BARNEY

low unit

Concerning the use of marble, the biggest novelty regards the new techniques employed in its working, which allows to obtain results of artistic relevance while enhancing the natural veins of the marble. Barney low unit shows a top in marble Colle Mandina decorated with "Serpente" Texture 4 finish, hand-crafted in micro relief; this unique engraving exalts the natural veins of the marble, stressing the uniqueness of each slab and giving an organic appearance to this inanimate material. This technique combines the most recent technologies employed in the field of numeric control with the hand finishing skills, thus ensuring the highest precision in the crafting of details, while highlighting the natural features of the material.

BARNEY

design Fabio Bonfa

low unit
250x50 H.70 cm

Top and structure in wood lacquered in shiny NCS S 8502Y. Doors covered in marble Colle Mandina. Central doors in marble Colle Mandina - Texture 4 - Snake. Base and metal details with satin black nickel-lacquered finish.

Colle Mandina marble_texture 4



Black Nickel satinized steel





ALCAZÀR
ceiling lamp

Alcazar is a "sculpture-chandelier" made of 15 stalactites with square section of 90 cm in blown opaline glass in high thickness, characterised by an irregular and unique surface for each element. The light diffused by elements in pyrex through the blown glass creates iridescent reflections and enhances the glassy mass with light-and-shade plays. The main structure in metal has a "snowflake" shape and is supported by cables in steel which allow the height regulation from a circular ceiling cup where the chandelier is hung to.

ALCAZÀR
design Edoardo Pandolfo & Francesco Palù

ceiling lamp
88x84 H.110 cm

Hand-blown Murano glass chandelier composed of 15 prismatic elements in opal finish with 5-light system, stainless steel star metal structure.

TAGORA
carpet

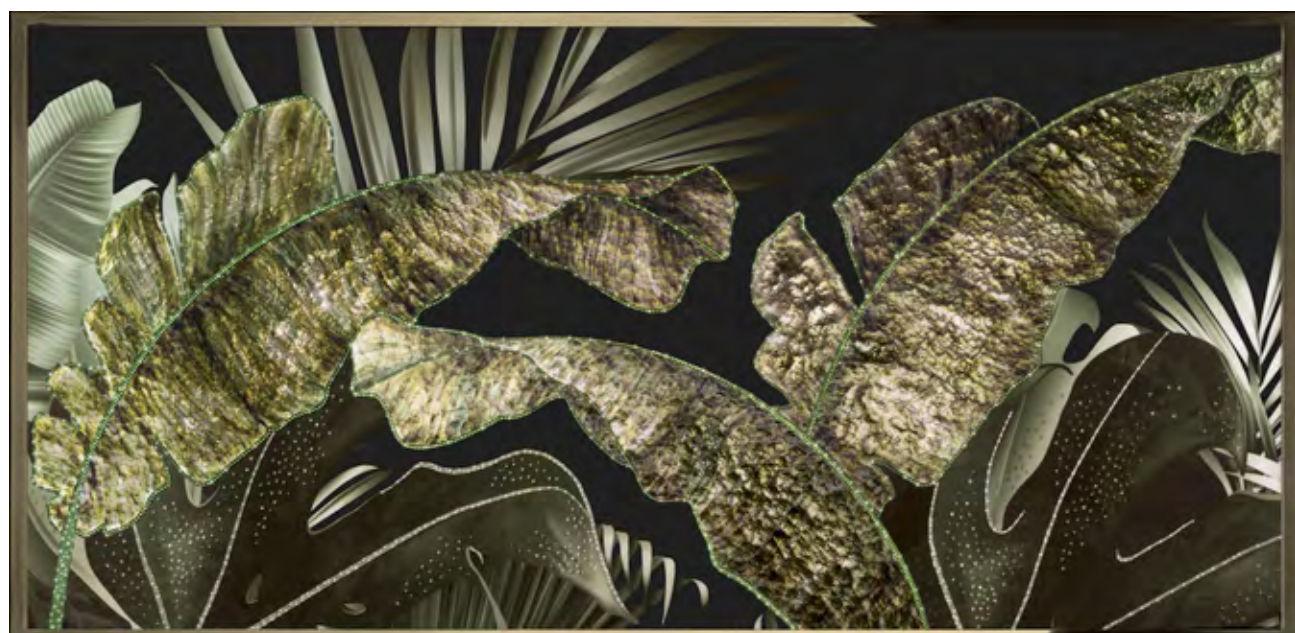


TAGORA
design La Conca

carpet
300x400 cm

Hand-tufted carpet in bamboo silk and New Zealand wool with hand-carving decoration. Backing in cotton.

TROPICAL
art work



TROPICAL
design Michele Astolfi

art work
120x245 cm

Art work on plexiglass with artistic glass
inserts and Swarovski crystals.

01. MILLER

Divano 276x105 H.85 cm. Divano tappezzato in tessuto Vegas 24316/16 Platino. Rivestimento schienale in tessuto Vermeer 24175/17 Ardesia con lavorazione cannettè. Cuscini volanti 35x35 cm in tessuto Vermeer 24175/111 Peltro. Profilo in acciaio, finitura Siena satinato.

Sofa 276x105 H.85 cm. Sofa upholstered in fabric Vegas 24316/16 Platino. Back cushions upholstered in velvet Vermeer 24175/17 Ardesia with cannettè quilting. Loose cushions 35x35 cm in velvet Vermeer 24175/111 Peltro. Steel profile with satinized Siena lacquered finish.

02. MILLER

Divano componibile 384x354 H.80 cm. Divano tappezzato in pelle Chamolè 24331/01 Avorio. Rivestimento schienale in tessuto Faber 24229/35 con lavorazione cannettè. Cuscini volanti 35x35 cm in velluto Vermeer 24175/17 Ardesia e 40x40 cm in tessuto Orangery 24317/685 Cielo-Sabbia. Profilo in acciaio, finitura Siena satinato.

Modular sofa 384x354 H.80 cm. Sofa upholstered in leather Chamolè 24331/01 Avorio. Back cushions upholstered in fabric Faber 24229/35 with cannettè quilting. Loose cushions 35x35 cm in velvet Vermeer 24175/17 Ardesia and 40x40 cm in fabric Orangery 24317/685 Cielo-Sabbia. Steel profile with satinized Siena lacquered finish.

03. MILLER

Tavolo basso 140x80 H.31 cm. Top sagomato in marmo Calacatta e marmo Verde Saint Denis. Struttura in legno rivestita in tessuto Faber 24229/35 Platino con lavorazione cannettè. Sotto-top e zoccolo laccato nero opaco. Profilo in acciaio con finitura Siena satinato. Fibbietta con logo e particolari Siena satinato.

Low table 140x80 H.31 cm. Shaped top in marble Calacatta and marble Green Saint Denis. Structure in wood upholstered in fabric Faber 24229/35 Platino with cannettè quilting. Under-top and plinth lacquered in mat black. Profile in steel with satin Siena-lacquered finish. Buckle with logo and metal details finished with satin Siena-lacquered finish.

04. MILLER

Tavolo basso Ø75 H.37 cm. Top sagomato in marmo Calacatta e marmo Verde Saint Denis. Struttura in legno rivestita in tessuto Faber 24229/35 Platino con lavorazione cannettè. Sotto-top e zoccolo laccato nero opaco. Profilo in acciaio con finitura Siena satinato. Fibbietta con logo e particolari Siena satinato.

Low table Ø75 H.37 cm. Shaped top in marble Calacatta and marble Green Saint Denis. Structure in wood upholstered in fabric Faber 24229/35 with cannettè quilting. Under-top and plinth lacquered in mat black. Profile in steel with satin Siena-lacquered finish. Buckle with logo and metal details finished with satin Siena-lacquered finish.

05. WHITNEY

Poltrona 93x91 H.78 cm. Rivestimento esterno trapuntato cannettè in tessuto Faber 24229/14 Testa di Moro. Rivestimento seduta in pelle Soft Leather 1151 Latte. Basamento in acciaio in finitura Nichel Nero satinato.

Armchair 93x91 H.78 cm. External structure with cannettè quilting upholstered in fabric Faber 24229/14 Testa di Moro. Seat upholstered in leather Soft 1151 Latte. Base in steel with satin black nickel-lacquered finish.

06. MONDRIAN

Consolle 180x42 H.92 cm. Struttura in acciaio Nichel Nero satinato. Top e laterale in marmo Rainforest - Texture 3 - Linfa. Top e ripiano inferiore in vetro fumè stratificato. Cassettiera con frontali laccati lucido NCS S 8502Y.

Console 180x42 H.92 cm. Structure in steel with satin black nickel-lacquered finished. Top and side in marble Rainforest - Texture 3 - Linfa. Top and lower shelf in smoked laminated glass. Chest of drawers with fronts lacquered shiny NCS S 8502Y.

07. BARNEY

Mobile basso 250x50 H.70 cm. Top e struttura in legno laccato lucido NCS S 8502Y. Rivestimento ante in marmo Colle Mandina. Ante centrali in marmo Colle Mandina - Texture 4 - Serpente. Struttura di base e particolari in acciaio Nichel Nero satinato.

Low unit 250x50 h.70 cm. Top and structure in wood lacquered in shiny NCS S 8502Y. Doors covered in marble Colle Mandina. Central doors in marble Colle Mandina - Texture 4 - Snake. Base and metal details with satin black nickel-lacquered finish.

08. ALCAZÀR

Plafoniera 88x84 H.110 cm. Lampadario in vetro di Murano soffiato a mano composto da 15 elementi prismatici in finitura opalina con impianto a 5 luci, struttura metallica a stella in acciaio inox.

Ceiling lamp 88x84 H.110 cm. Hand-blown Murano glass chandelier composed of 15 prismatic elements in opal finish with 5-light system, stainless steel star metal structure.

09. TAGORA

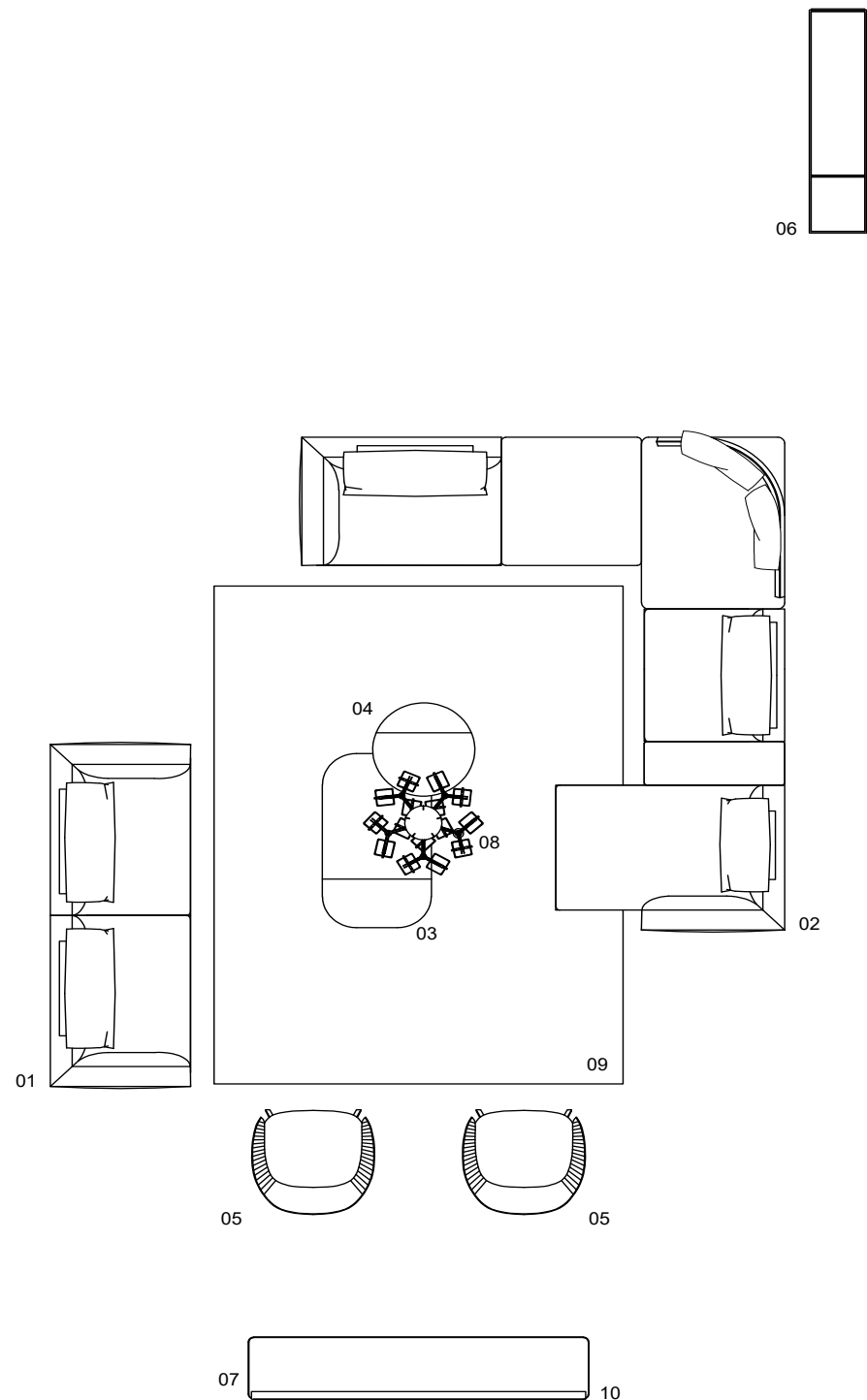
Tappeto 300x400 cm. Tappeto taftato a mano in bamboosilk e lana New Zealand con lavorazione carving manuale. Backing in cotone.

Carpet 300x400 cm. Hand-tufted carpet in bamboo silk and New Zealand wool with hand-carving decoration. Backing in cotton.

10. TROPICAL

Art work 120x245 cm. Opera su plexiglass con inserti in vetro artistico e cristalli Swarovski.

Art work 120x245 cm. Work on plexiglass with artistic glass inserts and Swarovski crystals.



Produced by
©IPE SRL
ALL RIGHTS RESERVED

*Visionnaire Logo, catalogue and advertising images are sole propriety of IPE srl, henceforth any use of the logo or adaptation of images is strictly forbidden without IPE srl prior approval; nonetheless, in any case the images must be used in such a way that there is no reasonable doubt that those belong to IPE srl and refer to IPE srl products.
No part of this publication can be reproduced or transmitted in any form or by any means, both electronic or mechanical, including photocopying and recording, or via any information storage and retrieval system, without written permission of the publisher.*

Art Director: Eleonore Cavalli



Tutti i colori dei rivestimenti, pelli e tessuti, delle lacche, dei vetri, dei marmi e dei tappeti non possono essere considerati come riferimento colore. Le misure dei prodotti possono subire delle modifiche rispetto alle indicazioni del catalogo.

All colors of leather or fabric's covers, lacquered wood, mirrors, marbles and carpets can't be considered as color references. The dimensions of products are subject to change according to the instructions of the catalog.

I.P.E. S.r.l.
Via Mattei 1 — 40069 Zola Predosa (Bo) Italy
tel. +39 051 6186311 — fax +39 051 6186310
www.ipe-cavalli.it
www.visionnaire-home.it
ipe@ipe.it



