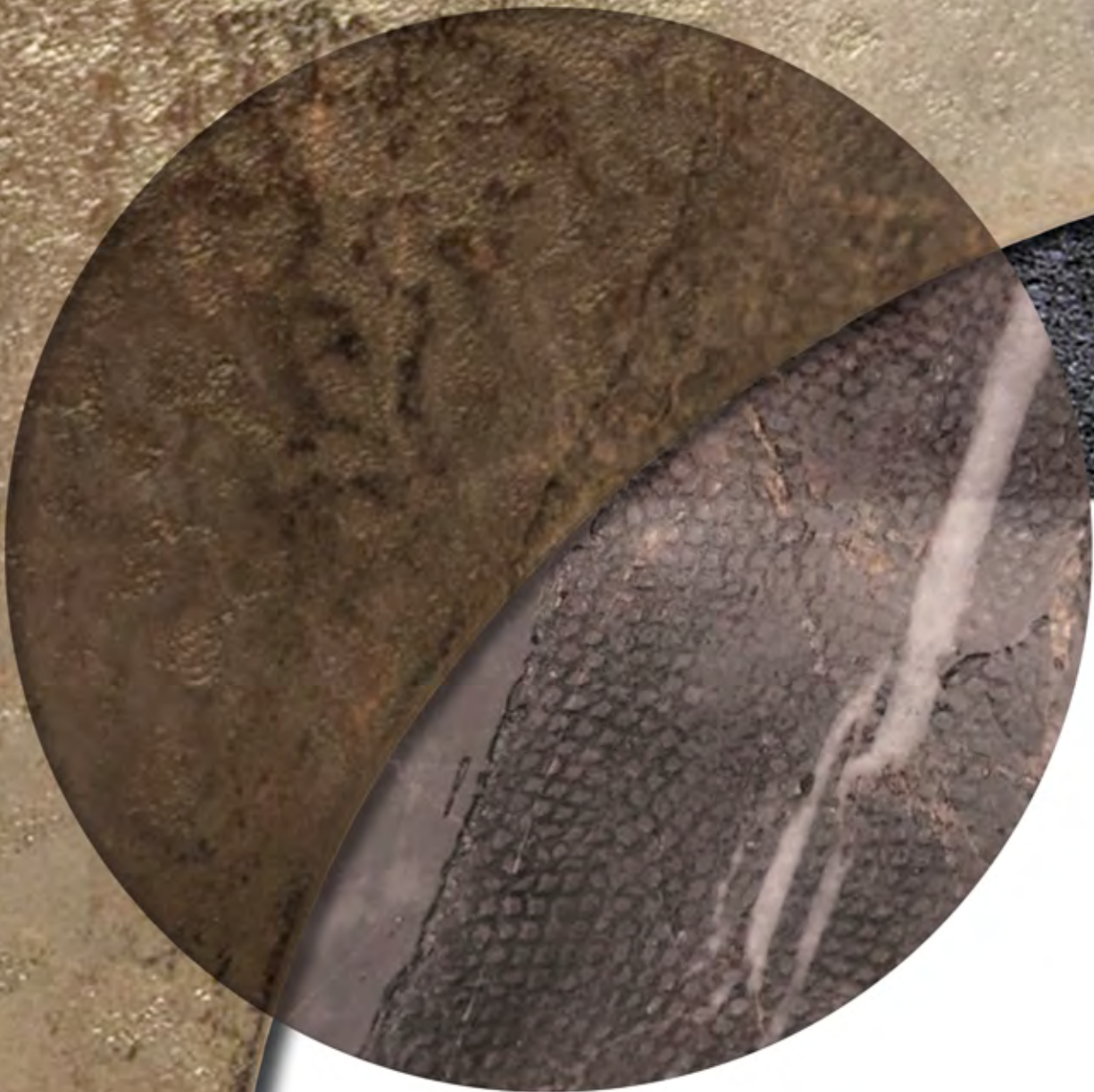


HOME PHILOSOPHY
visionnaire

B E A U T Y





PAVONE
throne

Peacock is an ambitious project which combines a fluid and organic design with complex technical elements, such as the petals-shaped elements designing a circular "corolla" shape around the back and armrests, in cast brass, shaped and polished by hand. Afterwards, the brass elements are chromed, then lacquered in the metal finishes included in Visionnaire selection (i.e. gold, siena, black nickel, etc). The semicircle seat structure is upholstered in leather and fabric, and the back cushions are padded one by one.



PAVONE
armchair

PAVONE
design Marc Ange

throne
262x104 H.160 cm

Armchair in brass and steel with polished and satin bronze-lacquered finish, upholstered in fabric Vermeer 24175/113 Blu Delft, Vermeer 24175/112 Celeste and Vermeer 24175/33 Giada. Armrest and backrest composed by petal-like elements made in hand-polished cast brass, with padded and upholstered pads. Base upholstered in leather Classic 24263/14 Sand.

PAVONE
design Marc Ange

armchair
104x70 H.95 cm

Armchair in brass and steel with polished Siena-lacquered finish, upholstered in fabric Pelmo 24312/18 Turchese. Armrest and backrest composed by petal-like elements made in hand-polished cast brass, with padded and upholstered pads. Base upholstered in leather Classic 24263/25 Polvere.



PAVONE
design Marc Ange

armchair
104x70 H.95 cm

Armchair in brass and steel with polished Siena-lacquered finish, upholstered in fabric Pelmo 24312/31 Gold - Pelmo 24312/23 Sangria, - Pelmo 24312/09 Onice - Pelmo 24312/17 Ceruleo. Armrest and backrest composed by petal-like elements made in hand-polished cast brass, with padded and upholstered pads. Base upholstered in leather Classic 24263/25 Polvere.

K Y L O

stool

Two new high-performant fabrics chosen to upholster Kylo stools.

Iris is a textile novelty suitable for outdoor and indoor furniture; it is composed by threads of polyester, obtained by recycling discarded plastic bottles, vaunting a perfectly circular lifecycle since it is made from 100% reclaimed materials and it is 100% recyclable. Totally made in Italy, Iris significantly contributes to reduce Co2 emissions and water wasting, saving 60% of the energy normally employed in productive processes.

Assam fabrics, obtained by combining synthetic and natural fibres, guarantee cutting-edge performances: they are able to decrease the body temperature, thus lowering the sweating and heartbeat rates of the seated person, they can absorb the humidity in the environment reducing the waste of energy used by climatizing technologies, they also have flame-retardant properties. This material is produced without using chemical or toxic products.

Legs in curved steel with conic section sustain the shaped seat. Backrest in curved wood upholstered in a quilted fabric surrounding the seat without continuity.



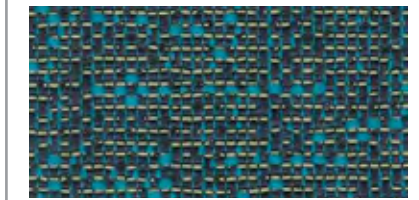
K Y L O

design Alessandro La Spada

stool
55x53 H.100 cm

Stool in curved wood with quilted upholstery in fabric Assam 24322/84 Genziana or Iris 24324/306 Bordeaux. Legs in conic-shaped tubular metal and turned feet with polished Siena-lacquered finish.

Assam 24322/84 Genziana



Iris 24324/306 Bordeaux



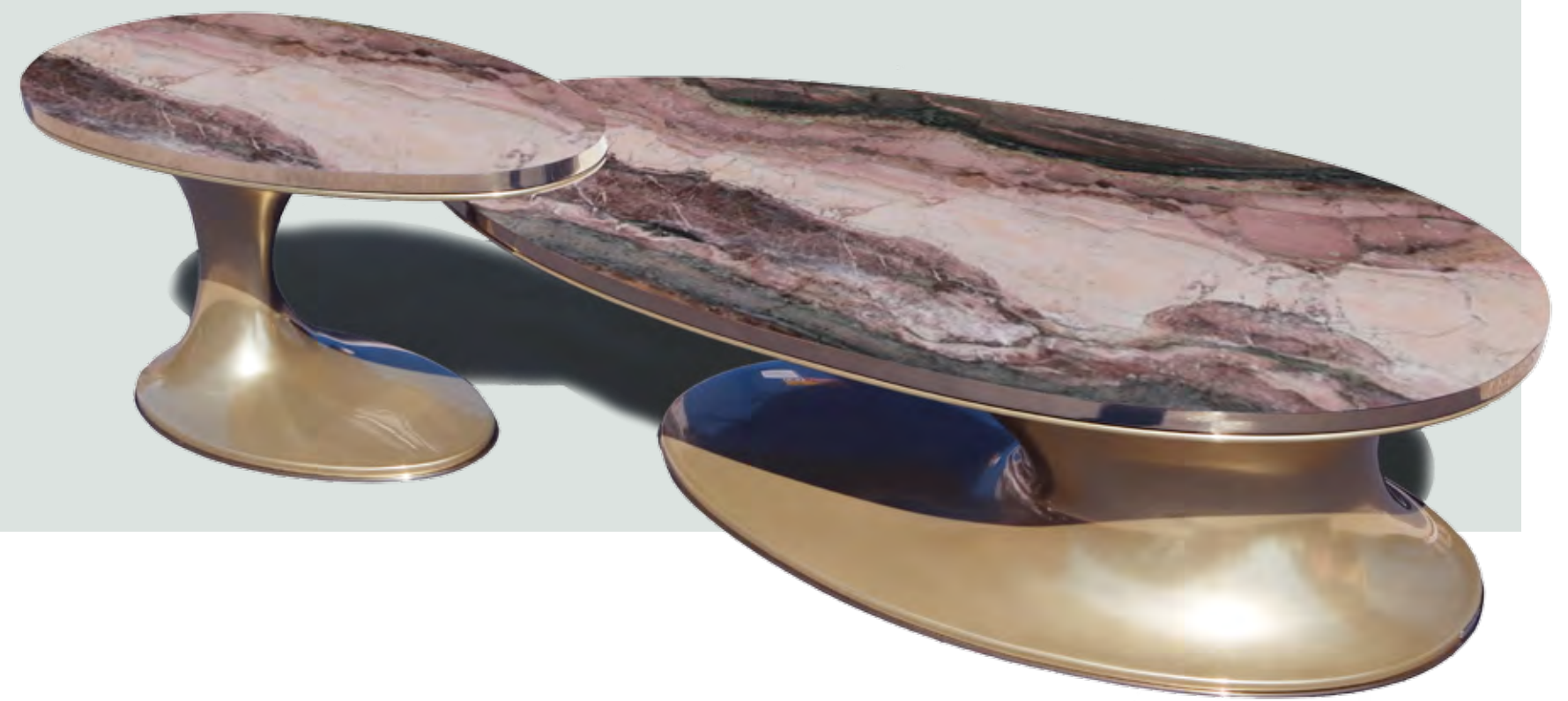
Siena lacquered steel



SOWILO

low table

Base with organic shape in nautical resin finished with shiny metal lacquer (bronze, gold, manganese, lead colour). Built-in top in marble. Top frame and base in polished stainless steel can be finished with any of the lacquers included in the metal finishes selection.



SOWILO

design Steve Leung

low table
150x75 H.38 cm

Low table with top in marble Acquasanta. Base in bronze resin. Top frame and base profile in steel with polished Siena-lacquered finish.

SOWILO HIGH

design Steve Leung

low table
90x45 H.49 cm

Low table with top in marble Acquasanta. Base in bronze resin. Top frame and base profile in steel with polished Siena-lacquered finish.

Acquasanta marble



Siena lacquered steel



01. PAVONE

Trono 262x104 H.160 cm. Poltrona in ottone e acciaio finitura Bronzo lucido e satinato, rivestito in tessuto Vermeer 24175/113 Blu Delft, Vermeer 24175/112 Celeste e Vermeer 24175/33 Giada. Braccioli e schienale formati da una corolla di elementi in ottone fuso e lucidato a mano con cuscinetti imbottiti e rivestiti. Basamento rivestito in pelle Classic 24263/14 Sand.

Throne 262x104 H.160 cm. Armchair in brass and steel with polished Siena-lacquered finish, upholstered in fabric Pelmo 24312/18 Turchese. Armrest and backrest composed by petal-like elements made in hand-polished cast brass, with padded and upholstered pads. Base upholstered in leather Classic 24263/25 Polvere.

02. PAVONE

Poltrona 104x70 H.95 cm. Poltrona in ottone e acciaio finitura Siena lucido, rivestita in tessuto Pelmo 24312/18 Turchese - Pelmo 24312/31 Gold - Pelmo 24312/23 Sangria, - Pelmo 24312/09 Onice - Pelmo 24312/17 Ceruleo. Braccioli e schienale formati da una corolla di elementi in ottone fuso e lucidato a mano con cuscinetti imbottiti e rivestiti. Basamento rivestito in pelle Classic 24263/25 Polvere.

Armchair 104x70 H.95 cm. Armchair in brass and steel with polished Siena-lacquered finish, upholstered in fabric Pelmo 24312/31 Gold - Pelmo 24312/23 Sangria, - Pelmo 24312/09 Onice - Pelmo 24312/17 Ceruleo. Armrest and backrest composed by petal-like elements made in hand-polished cast brass, with padded and upholstered pads. Base upholstered in leather Classic 24263/25 Polvere.

03. KYLO

Sgabello 55x53 H.100 cm. Sgabello in legno curvato rivestito in tessuto trapuntato Assam 24322/84 Genziana o Iris 24324/306 Bordeaux. Gambe in tubo metallico conificato e piedi torniti in finitura Siena lucido.

Stool 55x53 H.100 cm. Stool in curved wood with quilted upholstery in fabric Assam 24322/84 Genziana or Iris 24324/306 Bordeaux. Legs in conic-shaped tubular metal and turned feet with polished Siena-lacquered finish.

04. SOWILO

Tavolo basso 150x75 H.38 cm. Top in marmo Acquasanta. Base in resina bronzo. Cornice top e profilo di base acciaio Siena lucido.

Low table 150x75 H.38 cm. Low table with top in marble Acquasanta. Base in bronze resin. Top frame and base profile in steel with polished Siena-lacquered finish.

05. SOWILO HIGH

Tavolo basso 90x45 H.49 cm. Top in marmo Acquasanta. Base in resina bronzo. Cornice top e profilo di base acciaio Siena lucido.

Low table 90x45 H.49 cm. Low table with top in marble Acquasanta. Base in bronze resin. Top frame and base profile in steel with polished Siena-lacquered finish.

Produced by
©IPE SRL
ALL RIGHTS RESERVED

Visionnaire Logo, catalogue and advertising images are sole propriety of IPE srl, henceforth any use of the logo or adaptation of images is strictly forbidden without IPE srl prior approval; nonetheless, in any case the images must be used in such a way that there is no reasonable doubt that those belong to IPE srl and refer to IPE srl products.

No part of this publication can be reproduced or transmitted in any form or by any means, both electronic or mechanical, including photocopying and recording, or via any information storage and retrieval system, without written permission of the publisher.

Art Director: Eleonore Cavalli



Tutti i colori dei rivestimenti, pelli e tessuti, delle lacche, dei vetri, dei marmi e dei tappeti non possono essere considerati come riferimento colore. Le misure dei prodotti possono subire delle modifiche rispetto alle indicazioni del catalogo.

All colors of leather or fabric's covers, lacquered wood, mirrors, marbles and carpets can't be considered as color references. The dimensions of products are subject to change according to the instructions of the catalog.

I.P.E. S.r.l.
Via Mattei 1 — 40069 Zola Predosa (Bo) Italy
tel. +39 051 6186311 — fax +39 051 6186310
www.ipe-cavalli.it
www.visionnaire-home.it
ipe@ipe.it



