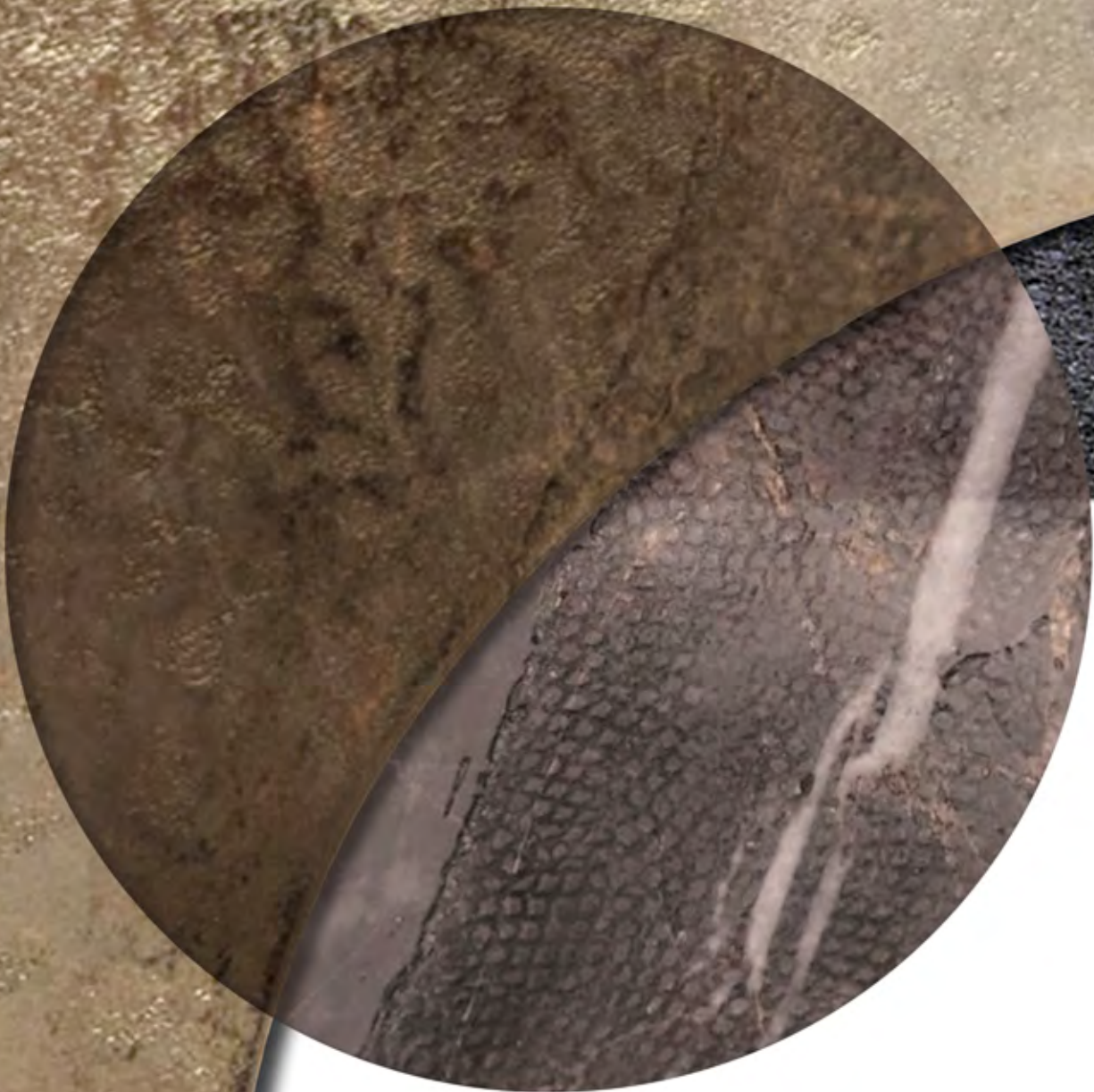


HOME PHILOSOPHY
visionnaire

BEAUTY





DOUGLAS LIVINGROOM



DOUGLAS LIVINGROOM



DOUGLAS LIVINGROOM



DOUGLAS LIVINGROOM



DOUGLAS LIVINGROOM



DOUGLAS LIVINGROOM



DOUGLAS LIVINGROOM



DOUGLAS LIVINGROOM



DOUGLAS

sofa

Sofa upholstered in leather or fabric. The armrests are made of curved elements in shiny metal in high thickness, placed on the sides in correspondence with the feet. Frame in wood with elastic belts for seat springing. Square armrests and backrests of big dimensions with external surface in soft acrylic layer under the cover. Seat cushions in polyurethane in different densities, Memory Foam® and feathers. Back cushions and internal armrest in polyurethane and feather, loose cushions in feather. For the version in fabric the seat cushions, the backrests and the armrests are provided with pipings in Kale fabric. Metal parts available in the metal lacquer finish selection. Sectional version available with central and side elements.

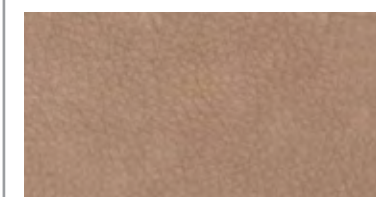


DOUGLAS
design Alessandro La Spada

sofa
300x160 H.67 cm

Sofa upholstered in leather Nabuk Libeccio 24330/3457 Tan. Base composed by two curved metal elements with polished Siena-lacquered finish. Back cushion upholstered in leather Nabuk Libeccio 24330/3455 Boro. Additional loose cushion 40x40 cm upholstered in fabric Bansky 24319/20 Rame one in fabric Bansky 24319/07 Marmotta.

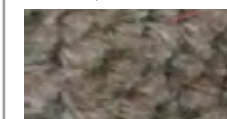
Nabuk Libeccio 24330/3457 Tan



Bansky 24319/20 Rame



Bansky 24319/07 Marmotta



Siena lacquered steel



DOUGLAS
modular sofa

DOUGLAS
design Alessandro La Spada

modular sofa - console
356x262 H.67 cm - 180x42 H. 52 cm

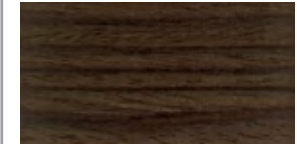
Modular sofa upholstered in leather Eco Skin 24327/48 Denim. Base composed by two curved metal elements with polished Siena-lacquered finish. Equipped with console fitting sofa rear-back.

Console in veneered wood B.181 with shiny finish. Metal parts with polished Siena-lacquered finish.

Eco Skin 24327/48 Denim



Veneer wood B. 181



Siena lacquered steel



DOUGLAS

dormeuse free

Dormeuse upholstered in leather or fabric, with base made of two curved metal elements acting as feet. Frame in wood with elastic belts for seat springing. Square armrests and backrests of big dimensions with external surface in soft acrylic layer under the cover. Seat cushions in polyurethane in different densities, Memory Foam® and feathers. Back cushions and internal armrest in polyurethane and feather, loose cushions in feather. Metal parts available in the metal lacquer finish selection.



DOUGLAS

design Alessandro La Spada

pouf free - dormeuse free
110x110 H.42 cm - 170x110 H.67 cm

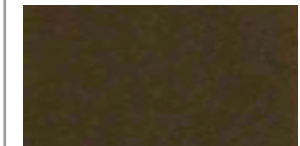
Pouf upholstered in fabric Bansky 24319/03 Segale and piping in leather Soft 1195 Fango. Shaped feet in metal with polished Siena-lacquered finish.

Dormeuse upholstered in fabric Bansky 24319/03 Segale and piping in leather Soft 1195 Fango. Base composed by two curved metal elements with polished Siena-lacquered finish. Additional loose cushion 40x40 cm in leather Nabuk Libeccio 24330/3455 Boro.

Bansky 24319/03 Segale



Soft Leather 1195 Fango



Siena lacquered steel



Stool upholstered in leather or fabric, with base made of two curved metal elements acting as feet. Frame in wood with elastic belts for seat springing. Seat cushion in polyurethane in different densities, Memory Foam® and feathers. Metal parts available in the metal lacquer finish selection.



DOUGLAS

armchair

Armchair upholstered in leather or fabric. The armrests are made of curved elements in shiny metal in high thickness, placed on the sides in correspondence with the feet. Frame in wood with elastic belts for seat springing. Square armrests and backrests of big dimensions with external surface in soft acrylic layer under the cover. Seat cushions in polyurethane in different densities, Memory Foam® and feathers. Back cushions and internal armrest in polyurethane and feather, loose cushions in feather. For the version in fabric the seat cushions, the backrests and the armrests have pipings in Kale fabric. Metal parts available in the metal lacquer finish selection.



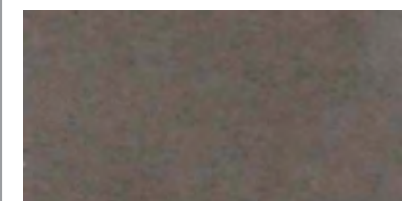
DOUGLAS

design Alessandro La Spada

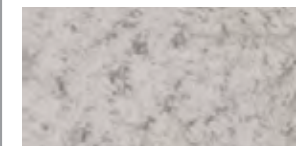
armchair
130x106 H.67 cm

Upholstered in fabric Kale 24315/22 Chocolate. Base composed by two curved metal elements with polished Siena-lacquered finish. Additional loose cushion 40x40 cm in fabric Bansky 24319/02 Tortora.

Kale 24315/22 Chocolate



Bansky 24319/02 Tortora



Siena lacquered steel



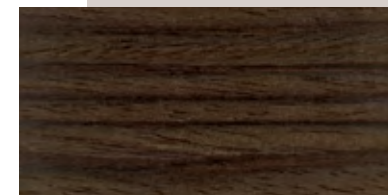
DOUGLAS

low table

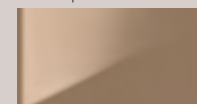
Structure in shiny aluminium and top in veneered or shiny lacquered wood (RAL colours).



Veneer wood B.181



Siena lacquered steel



DOUGLAS

design Alessandro La Spada

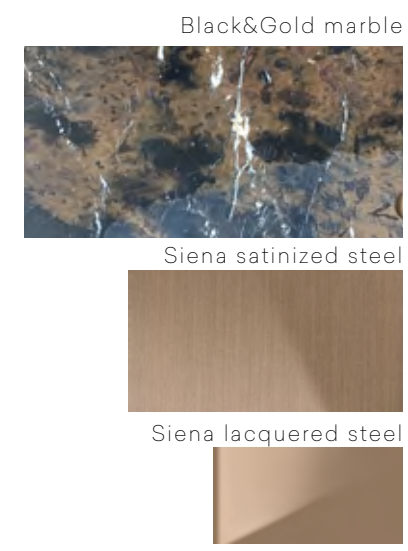
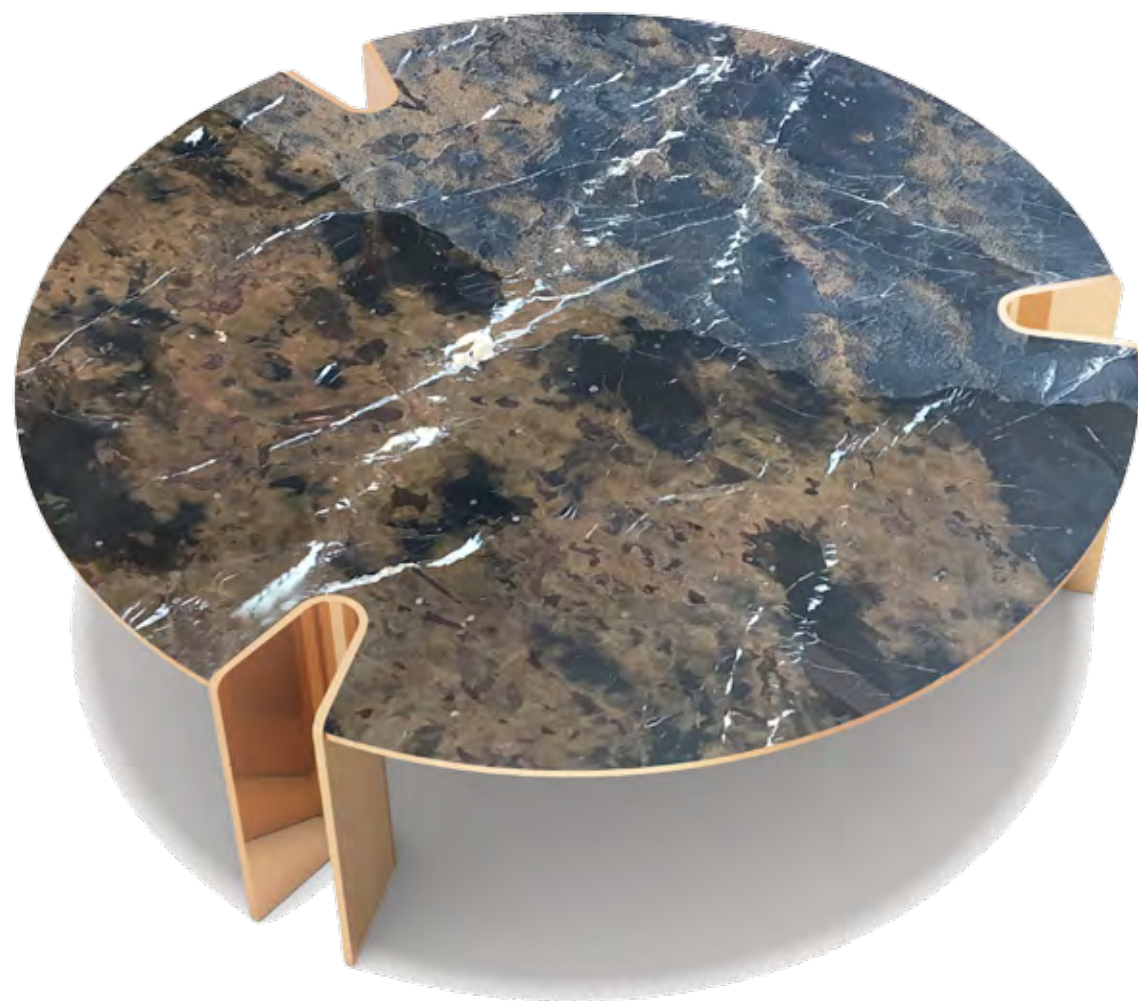
low table
60x60 H.56 cm

Structure in wood and metal with frame in aluminium with polished Siena-lacquered finish and top in wood with shiny B.181 veneer finish.

EGMONT

low table

Concerning the use of marble, the biggest novelty regards the new techniques employed in its working, which allows to obtain results of artistic relevance while enhancing the natural veins of the marble. Egmont low tables show a top in marble Black&Gold decorated with "Galuchat" Texture 2 finish, hand-crafted in micro relief; this unique engraving exalts the natural veins of the marble, stressing the uniqueness of each slab and giving an organic appearance to this inanimate material. The three legs of the table penetrate in to the marble top; the legs are composed by layers of high-pressure curved metal with high thickness, with a polished finished applied on the inside and a satin finish on the outside.



EGMONT

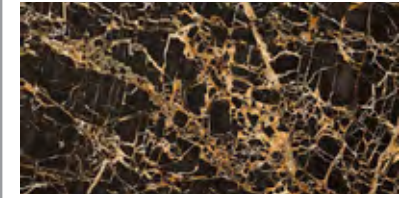
design Alessandro La Spada

low table
Ø92 H.32 cm – Ø92 H.42 cm

Structure in metal and marble, three legs in curved steel with polished internal surface and externally finished with satin Siena lacquer. Top in marble Black&Gold, partially recessed, with three marks corresponding to the legs. Marble top finished with micro-relief carved decoration Texture 2 – Galuchat.

LEONARDO
high unit

Black & Gold marble



Gloss metal anthracite



Gold lacquered steel

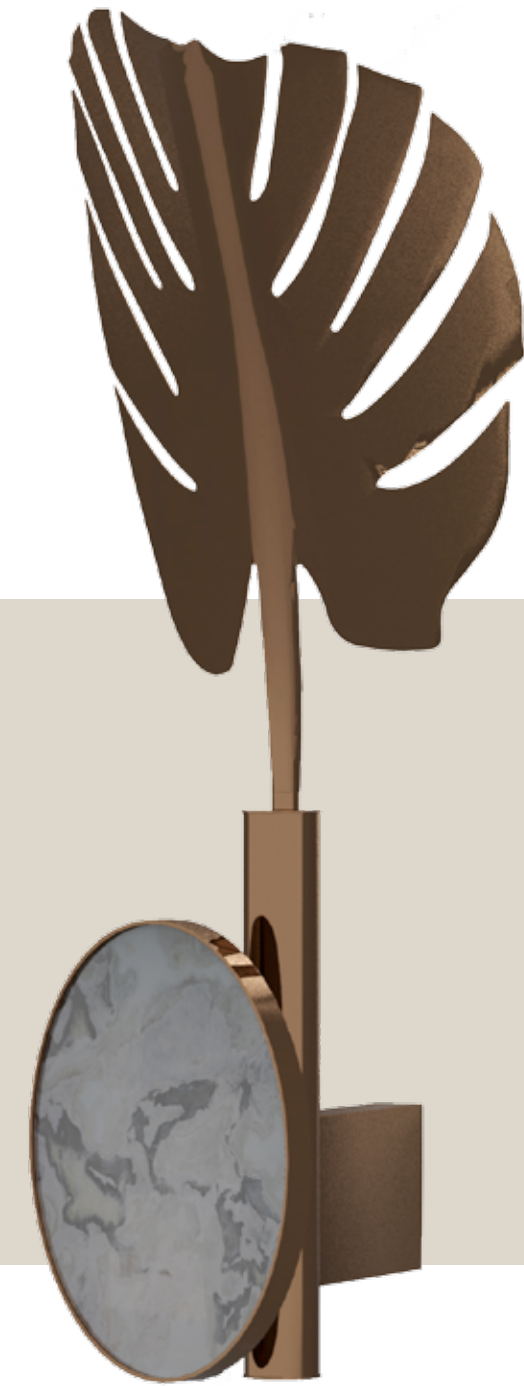


LEONARDO
design Alessandro La Spada

high unit
240x50 H.90 cm

Unit with 4 doors with shaped top in marble Black&Gold. Structure in wood with canneté decoration, lacquered in polished Antracite Metal. Internal structure equipped with glass shelves and lacquered in mat black. Equipped with internal LED light. Plinth, under-top profile and vertical insert in steel with polished gold-lacquered finish.

CALLIA
lightings



CALLIA
design Alessandro La Spada

wall lamp
29x41 H.60 cm

Lamp in stainless steel with leaf-shaped lampshade, internal surface with satin finish and externally finished with polished Siena lacquer. Decorative element in marble Dover White.

Dover White marble



Siena lacquered steel





Dover White marble



Caffè Amaro marble



Siena lacquered steel



CALLIA
design Alessandro La Spada

floor lamp
44x43 H.179 cm

Lamp in stainless steel with three stems and leaves-shaped lampshades, internal surface with satin finish and externally finished with polished Siena lacquer. Large decorative element in marble Caffè Amaro. Medium decorative element in marble Dover White. Small decorative element in Ivory Onyx.



CALLIA
design Alessandro La Spada

table lamp
27x21 H.60 cm

Lamp in stainless steel with leaf-shaped lampshade, internal surface with satin finish and externally finished with polished Siena lacquer. Decorative element in marble Dover white.

MALCOM
design Alessandro La Spada

carpet
280x280 cm

Hand-tufted carpet in bamboo silk
and New Zealand wool with hand-
carving decoration. Backing in cotton.



MALCOM
carpet

Carpet with unique design, characterised by a soft surface in bamboo silk with high thickness and an "engraved" decoration with "agata" graphic effect. The design is enhanced by low-relief decorations and inserts in New Zealand wool emphasising the precision of the artisan work. The irregular edge reminds of the natural inspiration of its design.

01.DOUGLAS

Divano 300x160 H.67 cm. Rivestimento in pelle Nabuk Libeccio 24330/3455 Boro. Base composta da due elementi metallici curvi in finitura Siena lucido. Cuscino schienale rivestito in pelle Nabuk Libeccio 24330/3455 Boro. Cuscino volante extra cm.40 rivestito in tessuto Banský 24319/07 Marmotta. Cuscino volante extra 40x40 cm rivestito in tessuto Banský 24319/20 Rame.

Sofa 300x160 H.67 cm. Sofa upholstered in leather Nabuk Libeccio 24330/3455 Boro. Base composed by two curved metal elements with polished Siena-lacquered finish. Back cushion upholstered in leather Nabuk Libeccio 24330/3455 Boro. Additional loose cushion 40x40 cm upholstered in fabric Banský 24319/07 Marmotta one in fabric Banský 24319/20 Rame.

01I.DOUGLAS

Modular sofa 356x262 H.67 cm. Rivestimento in pelle Eco Skin 24327/48 Denim. Base composta da due elementi metallici curvi in finitura Siena lucido. Dotato di consolle retro divano 180x42 H. 52 cm. Console in essenza B.181 con finitura lucida. Parti metalliche in finitura Siena lucido.

Modular sofa 356x262 H.67 cm. Upholstered in leather Eco Skin 24327/48 Denim. Base composed by two curved metal elements with polished Siena-lacquered finish. Equipped with console fitting sofa rear-back 180x42 H. 52 cm. Console in veneered wood B.181 with shiny finish. Metal parts with polished Siena-lacquered finish.

02.DOUGLAS

Dormeuse free 170x110 H.67 cm. Rivestimento in tessuto Banský 24319/03 Segale e filetti in pelle Soft Leather 1195 Fango. Base composta da due elementi metallici curvi in finitura Siena lucido. Cuscino volante extra cm40x40 in pelle Nabuk Libeccio 24330/3455 Boro.

Dormeuse free 170x110 H.67 cm. Upholstered in fabric Banský 24319/03 Segale and pipin in leather Soft 1195 Fango. Base composed by two curved metal elements with polished Siena-lacquered finish. Additional loose cushion 40x40 cm in leather Nabuk Libeccio 24330/3455 Boro.

03.DOUGLAS

Pouf free 110x110 H.42 cm. Rivestito in tessuto Banský 24319/03 Segale e filetti in pelle Soft Leather 1195 Fango. Piede sagomato in metallo, finitura Siena lucido.

Pouf free 110x110 H.42 cm. Upholstered in fabric Banský 24319/03 Segale and piping in leather Soft 1195 Fango. Shaped feet in metal with polished Siena-lacquered finish.

04.DOUGLAS

Poltrona 130x106 H.67 cm. Rivestita in pelle Nabuk Libeccio 24330/3455 Boro. Base composta da due elementi metallici curvi in finitura Siena lucido. Cuscino volante extra cm.40x40 in tessuto Banský 24319/02 Tortora.

Armchair 130x106 H.67 cm. Upholstered in leather Nabuk Libeccio 24330/3455 Boro Base composed by two curved metal elements with polished Siena-lacquered finish. Additional loose cushion 40x40 cm in fabric Banský 24319/02 Tortora.

05.DOUGLAS

Tavolo basso 60x60 H.56 cm. Struttura in legno e metallo con telaio in alluminio Siena lucido e top in legno rivestito in essenza B.181 laccato lucido.

Low table 60x60 H.56 cm. Structure in wood and metal with frame in aluminium with polished Siena-lacquered finish and top in wood with shiny B.181 veneer finish.

06.EGMONT

Tavoli bassi Ø92 H.32 cm – Ø92 H.42 cm. Struttura in metallo e marmo, tre gambe in acciaio curvo con superficie interna lucida ed esterna satinata in finitura Siena. Top in marmo Black&Gold parzialmente incassato con tre impronte in corrispondenza delle gambe. Il top in marmo è lavorato con finitura superficiale in micro rilievo incisorio decorativo con Texture 2 - Galuchat.

Low tables Ø92 H.32 cm – Ø92 H.42 cm. Structure in metal and marble, three legs in curved steel with polished internal surface and externally finished with satin Siena lacquer. Top in marble Black&Gold, partially recessed, with three marks corresponding to the legs. Marble top finished with micro-relief carved decoration Texture 2 – Galuchat.

08.LEONARDO

Madia 240x50 H.90 cm. Mobile a 4 ante con top sagomato in marmo Black&Gold. Struttura in legno con lavorazione cannetè laccata Antracite Metal lucido. Interno, laccato nero opaco, con ripiani in vetro. Provvisto di illuminazione LED interna. Zoccolo, profilatura sottotop e inserto verticale acciaio, finitura Oro lucido.

Unit with doors 240x50 H.90 cm. Unit with 4 doors with shaped top in marble Black&Gold. Structure in wood with canneté decoration, lacquered in polished Antracite Metal. Internal structure equipped with glass shelves and lacquered in mat black. Equipped with internal LED light. Plinth, under-top profile and vertical insert in steel with polished gold-lacquered finish.

09.CALLIA

Lampada da tavolo mini 27x21 H.60 cm. Lampada in acciaio inox con diffusore a forma di foglia, con superficie interna satinata ed esterna lucida in finitura Siena. Elemento decorativo in marmo Dover white.

Mini table lamp 27x21 H.60 cm. Lamp in stainless steel with leaf-shaped lampshade, internal surface with satin finish and externally finished with polished Siena lacquer. Decorative element in marble Dover white.

10.CALLIA

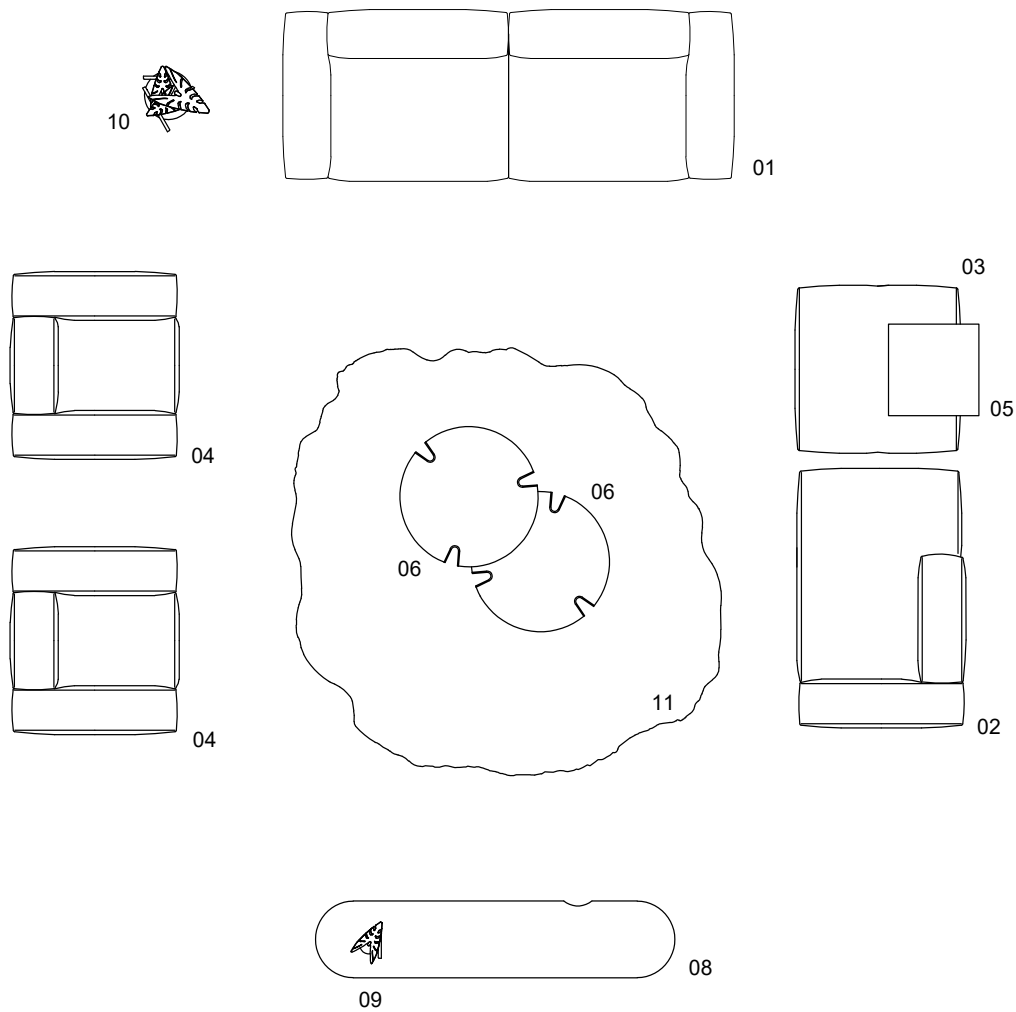
Piantana 44x43 H.179 cm. Lampada in acciaio inox compsta da tre steli e diffusori a forma di foglia, con superficie interna satinata ed esterna lucida, in finitura Siena. Elemento decorativo grande in marmo Caffè Amaro. Elemento decorativo medio in marmo Dover White. Elemento decorativo piccolo in Onice Avorio.

Floor lamp 44x43 H.179. Lamp in stainless steel with three stems and leaves-shaped lampshades, internal surface with satin finish and externally finished with polished Siena lacquer. Large decorative element in marble Caffè Amaro. Medium decorative element in marble Dover White. Small decorative element in Ivory Onyx.

11.MALCOM

Tappeto 280x280 cm. Tappeto in bamboo silk, taftato a mano in bamboosilk e lana New Zealand con lavorazione carving manuale. Backing in cotone.

Carpet 280x280 cm. Hand-tufted carpet in bamboo silk and New Zealand wool with hand-carving decoration. Backing in cotton.



Produced by
©IPE SRL
ALL RIGHTS RESERVED

*Visionnaire Logo, catalogue and advertising images are sole propriety of IPE srl, henceforth any use of the logo or adaptation of images is strictly forbidden without IPE srl prior approval; nonetheless, in any case the images must be used in such a way that there is no reasonable doubt that those belong to IPE srl and refer to IPE srl products.
No part of this publication can be reproduced or transmitted in any form or by any means, both electronic or mechanical, including photocopying and recording, or via any information storage and retrieval system, without written permission of the publisher.*

Art Director: Eleonore Cavalli



Tutti i colori dei rivestimenti, pelli e tessuti, delle lacche, dei vetri, dei marmi e dei tappeti non possono essere considerati come riferimento colore. Le misure dei prodotti possono subire delle modifiche rispetto alle indicazioni del catalogo.

All colors of leather or fabric's covers, lacquered wood, mirrors, marbles and carpets can't be considered as color references. The dimensions of products are subject to change according to the instructions of the catalog.

I.P.E. S.r.l.
Via Mattei 1 — 40069 Zola Predosa (Bo) Italy
tel. +39 051 6186311 — fax +39 051 6186310
www.ipe-cavalli.it
www.visionnaire-home.it
ipe@ipe.it



