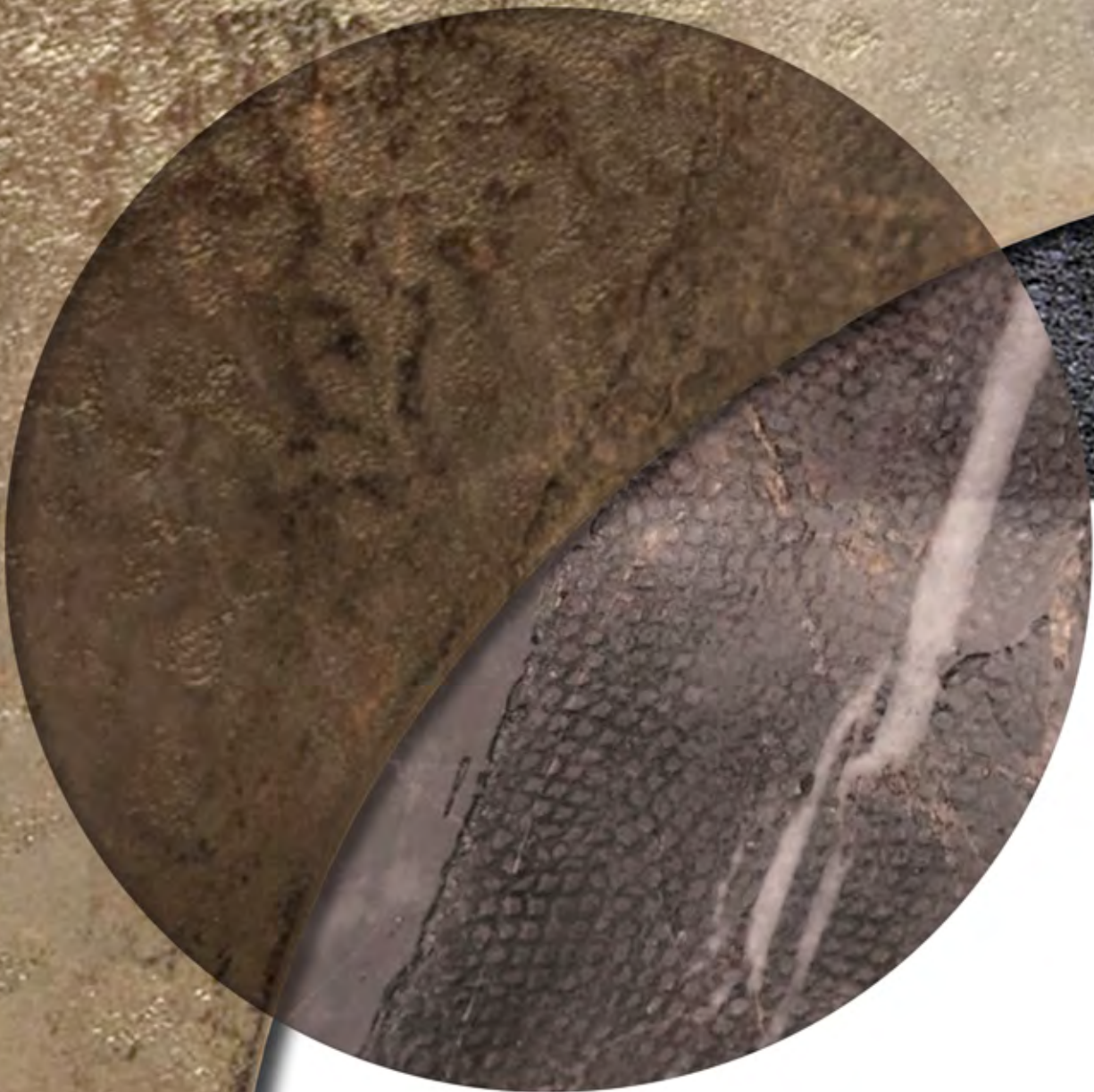


HOME PHILOSOPHY  
visionnaire

**B E A U T Y**







CA' FOSCARI  
sofa

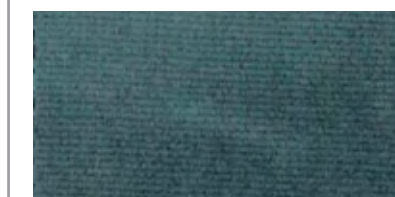


**CA' FOSCARI**  
design Alessandro La Spada

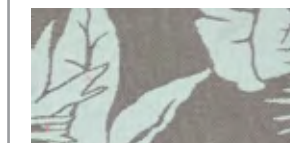
sofa  
290x98 H.78 cm

Upholstery in fabric Galizia 24321/18 Cobalto. Shaped base and armrest profiles in steel with champagne-lacquered polished finish. Loose cushions 35x35 cm in Orangery 24317/685 Cielo-Sabbia.

Galizia 24321/18 Cobalto



Orangery 24317/685 Cielo-Sabbia



Champagne lacquered steel



**CA' FOSCARI**  
armchair

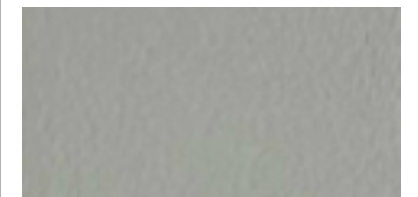


**CA' FOSCARI**  
design Alessandro La Spada

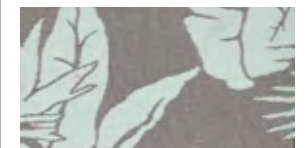
armchair  
110x98 H.78 cm

Upholstery in leather Soft 1184 Peltro. Back cushion in fabric Orangery 24317/685 Cielo-Sabbia. Base and profiles in steel with champagne-lacquered polished finish.

Soft Leather 1184 Peltro



Orangery 24317/685 Cielo-Sabbia



Champagne lacquered steel





## J E T P L A N E

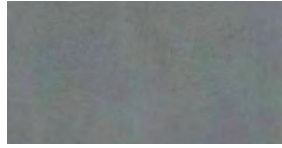
writing desk

*Structure of the unit with parabolic shape produced by means of ultrasound printing of wooden panels. External structure with lacquer finish, emphasising the sinuosity of its lines. Semi-elliptic top covered in leather supported by the wall. The top intersects with a round mirror with light edge, reminding of a sunset. Alternatively, a table mirror can be ordered.*

Caffè Amaro marble



Malta Leather 24261/09 Mercurio



Siena satinized steel



**J E T P L A N E**  
design Steve Leung

writing desk  
280x92 H.76 cm

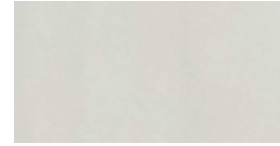
Oval top in bevelled marble Caffè Amaro Extra, cable guides with satin Siena-lacquered finish. Structure upholstered in leather Malta 24261/09 Mercurio with 'Jet Plane' quilted lozenge motif. Arc-shaped base in wood with internal upholstery in leather Malta 24261/09 Mercurio and externally covered in satin Siena-lacquered steel. Handle with insert in leather Malta 24261/09 Mercurio. Drawers internally lacquered in mat RAL 3007.





**PLANET**  
office armchair

Malta Leather 24261/02 Perla



Siena satinized steel



**PLANET**  
design Steve Leung

office armchair  
95x79 H.133 cm

Shaped structure upholstered in leather Malta 24261/02 Perla, quilted armrests and backrest with decorative perforated motif. 5-spoke steel base with wheels and turnings in steel with satin Siena-lacquered finish. Rotating damping piston with adjustable height and self-locking drive system.





# HAMILTON

low unit



## HAMILTON

design Alessandro La Spada

low unit  
250x50 H.75 cm

Concave sides and top in wood veneer C.902 Sicomore Frisé with polished finish. Top frame and internal supporting structure in polished gold-lacquered steel. Internal structure, shelves, drawers and rear back lacquered in mat RAL 7047. Optional internal LED lights available.

C.902 Sicomore Frisé



Champagne lacquered steel





Velvet Onyx marble



Champagne laquered steel



**REBEL**  
design Alessandro La Spada

chandelier  
66x61 H.90 cm

Lampshades with different sizes in Velvet Onyx, backlit with LED lights. Main structure with arms in metal finished with polished champagne lacquer.

**REBEL**  
design Alessandro La Spada

wall lamp  
50x31 H.61 cm

Lampshades with different sizes in Velvet Onyx, backlit with LED lights. Main structure with arms in metal finished with polished champagne lacquer.



**REBEL**  
lightings



**REBEL**  
design Alessandro La Spada

table lamp  
46x33 H.58 cm

Lampshades with different sizes in Velvet Onyx, backlit with LED lights. Main structure with arms in metal finished with polished champagne lacquer.

**MARVEL**

design Alessandro La Spada

carpet  
300x400 cm

Hand-tufted carpet, 100% in bamboo silk; marble-like motif with different colour shades. Round corners with inserts in satin brass with bas-relief engraved V-logo. Backing in cotton.



**MARVEL**  
carpet

## 01. CA' FOSCARI

Divano 290x98 H.78 cm. Rivestimento in tessuto Galizia 24321/18 Cobalto. Basamento curvilineo e profilature bracciolo in acciaio champagne lucido. Cuscini volanti 35x35 cm in Orangery 24317/685 Cielo-Sabbia.

*Sofa 290x98 H.78 cm. Upholstery in fabric Galizia 24321/18 Cobalto. Shaped base and armrest profiles in steel with champagne-lacquered polished finish. Loose cushions 35x35 cm in Orangery 24317/685 Cielo-Sabbia.*

## 02. CA' FOSCARI

Poltrona 110x98 H.78 cm. Rivestimento in pelle Soft Leather 1184 Peltro. Cuscino schienale in tessuto Orangery 24317/685 Cielo-Sabbia. Basamento e profili acciaio champagne lucido.

*Armchair 110x98 h.78 cm. Upholstery in leather Soft 1184 Peltro. Back cushion in fabric Orangery 24317/685 Cielo-Sabbia. Base and profiles in steel with champagne-lacquered polished finish.*

## 03. JET PLANE

Scrivania 280x92 H.76 cm. Top ovale in marmo Caffè Amaro Extra bisellato, con passacavi Siena satinato. Struttura rivestita in pelle Malta 24261/09 Mercurio con trapuntatura a losanghe 'Jet Plane'. Base ad arco in legno con rivestimento interno in pelle Malta 24261/09 Mercurio ed esterno in acciaio Siena satinato. Maniglietta con inserto in pelle Malta 24261/09 Mercurio. Interno cassetti laccato RAL 3007 opaco.

*Writing desk 280x92 H.76 cm. Oval top in bevelled marble Caffè Amaro Extra, cable guides with satin Siena-lacquered finish. Structure upholstered in leather Malta 24261/09 Mercurio with 'Jet Plane' quilted lozenge motif. Arc-shaped base in wood with internal upholstery in leather Malta 24261/09 Mercurio and externally covered in satin Siena-lacquered steel. Handle with insert in leather Malta 24261/09 Mercurio. Drawers internally lacquered in mat RAL 3007.*

## 04. PLANET

Sedia da ufficio 95x79 H.133 cm. Scocca sagomata rivestita in pelle Malta 24261/02 Perla con braccioli e schienale trapuntati con lavorazione a traforo. Base in acciaio inox a 5 razze con ruote e torneria in acciaio Siena satinato. Pistone ammortizzato girevole regolabile in altezza con sistema basculante bloccabile.

*Office chair 95x79 H.133 cm. Shaped structure upholstered in leather Malta 24261/02 Perla, quilted armrests and backrest with decorative perforated motif. 5-spoke steel base with wheels and turnings in steel with satin Siena-lacquered finish. Rotating damping piston with adjustable height and self-locking drive system.*

## 05. HAMILTON

Mobile basso 250x50 H.75 cm. Fianchi concavi e top in essenza C.902 Sicomore Frisé lucido. Cornice top e montanti interni in acciaio oro lucido. Interno, ripiani, cassetti e retro laccati RAL 7047 opaco. Illuminazione interna a LED opzionale.

*Low unit 250x50 H.75 cm. Concave sides and top in wood veneer C.902 Sicomore Frisé with polished finish. Top frame and internal supporting structure in polished gold-lacquered steel. Internal structure, shelves, drawers and rear back lacquered in mat RAL 7047. Optional internal LED lights available.*

## 06. REBEL

Lampadario 66x61 H.90 cm. Elementi diffusori di varia misura in marmo Onice Velluto retroilluminati a LED. Struttura principale metallica a bracci in finitura champagne lucido.

*Chandelier 66x61 H.90 cm. Lampshades with different sizes in marble Velvet Onyx, backlit with LED lights. Main structure with arms in metal finished with polished champagne lacquer.*

## 07. REBEL

Applique 50x31 H.61 cm. Elementi diffusori di varia misura in marmo Onice Velluto retroilluminati a LED. Struttura principale metallica a bracci in finitura champagne lucido.

*Wall lamp 50x31 H.61 cm. Lampshades with different sizes in Velvet Onyx, backlit with LED lights. Main structure with arms in metal finished with polished champagne lacquer.*

## 08. REBEL

Lampada da tavolo 46x33 H.58 cm. Elementi diffusori di varia misura in marmo Onice Velluto retroilluminati a LED. Struttura principale metallica a bracci in finitura champagne lucido.

*Table lamp 46x33 H.58 cm. Lampshades with different sizes in Velvet Onyx, backlit with LED lights. Main structure with arms in metal finished with polished champagne lacquer.*

## 09. MARVEL

Tappeto 300x400 cm. Taftato a mano 100% in Bamboo Silk, disegno a motivo marmoreo, a diverse tonalità. Gli angoli smussati ospitano quattro inserti in ottone satinato con logo Visionnaire inciso in bassorilievo. Backing in cotone.

*Carpet 300x400 cm. Hand-tufted carpet, 100% in bamboo silk; marble-like motif with different colour shades. Round corners with inserts in satin brass with bas-relief engraved V-logo. Backing in cotton.*

Produced by  
©IPE SRL  
ALL RIGHTS RESERVED

*Visionnaire Logo, catalogue and advertising images are sole propriety of IPE srl, henceforth any use of the logo or adaptation of images is strictly forbidden without IPE srl prior approval; nonetheless, in any case the images must be used in such a way that there is no reasonable doubt that those belong to IPE srl and refer to IPE srl products.*

*No part of this publication can be reproduced or transmitted in any form or by any means, both electronic or mechanical, including photocopying and recording, or via any information storage and retrieval system, without written permission of the publisher.*

Art Director: Eleonore Cavalli



Tutti i colori dei rivestimenti, pelli e tessuti, delle lacche, dei vetri, dei marmi e dei tappeti non possono essere considerati come riferimento colore. Le misure dei prodotti possono subire delle modifiche rispetto alle indicazioni del catalogo.

*All colors of leather or fabric's covers, lacquered wood, mirrors, marbles and carpets can't be considered as color references. The dimensions of products are subject to change according to the instructions of the catalog.*

I.P.E. S.r.l.  
Via Mattei 1 — 40069 Zola Predosa (Bo) Italy  
tel. +39 051 6186311 — fax +39 051 6186310  
[www.ipe-cavalli.it](http://www.ipe-cavalli.it)  
[www.visionnaire-home.it](http://www.visionnaire-home.it)  
[ipe@ipe.it](mailto:ipe@ipe.it)



