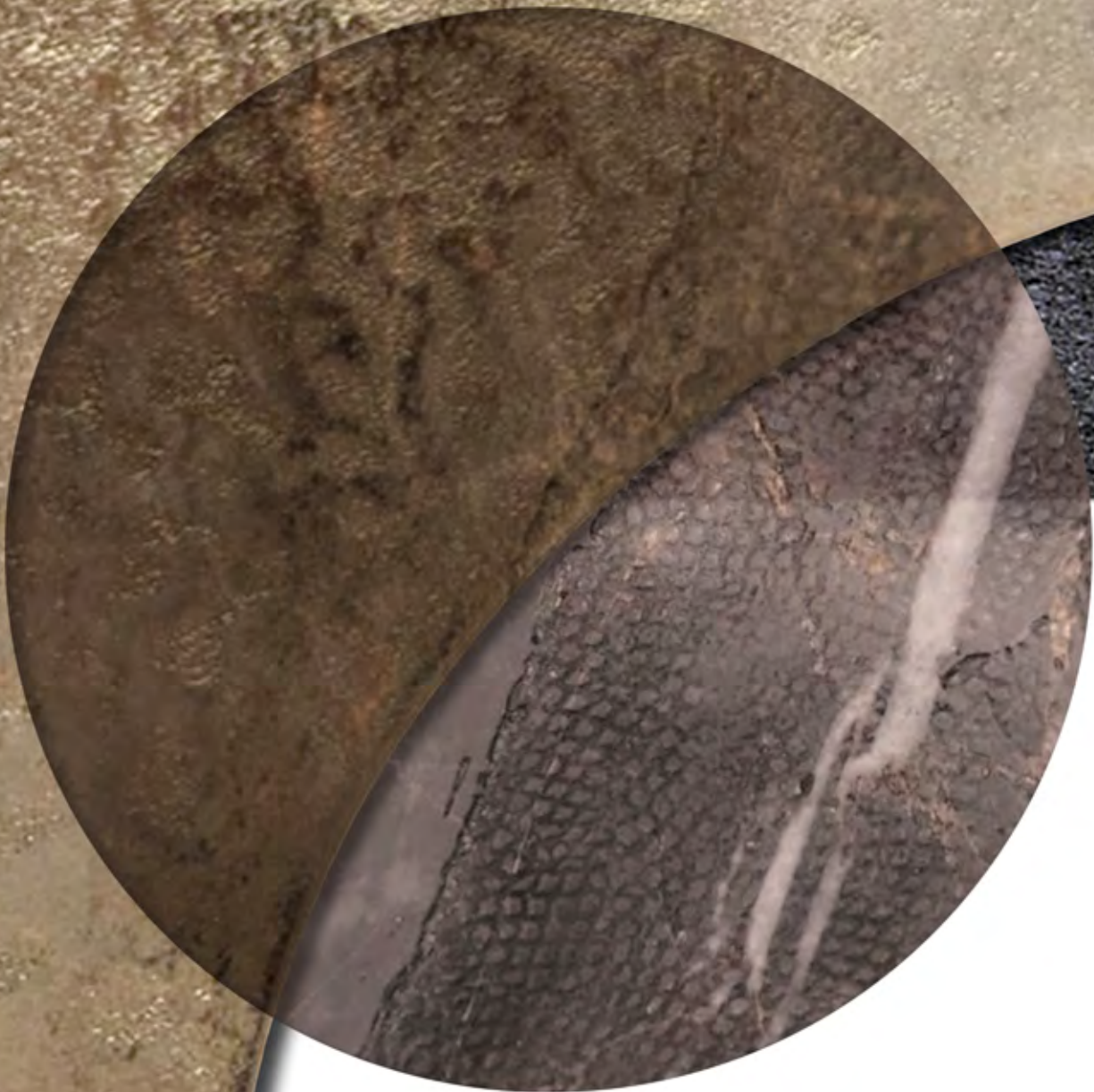


HOME PHILOSOPHY
visionnaire

BEAUTY





ARKADY DINING ROOM



ARKADY DINING ROOM



ARKADY DINING ROOM





ARKADY DINING ROOM



ARKADY DINING ROOM



ARKADY DINING ROOM

ARKADY

dining table

The Arkady dining table is made of an artistic stone slab and a transparent glass top, forming a display case. The legs are in metal worked in the foundry by sand casting, in order to create a three-dimensional texture with a "hammered" effect: created through a "master template", the sand mould is covered with the fused metal. The sand, extremely fine, creates a 3D texture which is polished by hand to obtain a unique material effect, and is lacquered with the colours of the Visionnaire samples such as gold, chrome, black nickel, etc. The stone slab is worked manually to give this element a unique and precious value, through the processing in bas-relief of the Crema Marfil stone, with irregular borders, and the laying of artistic resins and Himalayan salt. The extra-clear glass top with bevelled edge protrudes from the irregular edge of the stone with an oval shape and is placed on the base in four points to give the maximum idea of lightness.



ARKADY

design Alessandro La Spada

dining table
280x150 H.75 cm

Legs in cast of aluminium and steel with hammered satin Siena-lacquered finish. Elliptic top in tempered extra-clear glass. Hand-made under-top in marble with artistic insert consisting of natural pigments and minerals.

Decorated marble with mineral texture



Siena satinized steel



ASTRID

chair

Padded chair with curved wood shell upholstered and covered in leather or fabric. Legs in aluminum cast available in the metal finishing selection. The back is also available in the leather "quilted" version with "fans" or "foliage" embroidery with a slightly padded design.



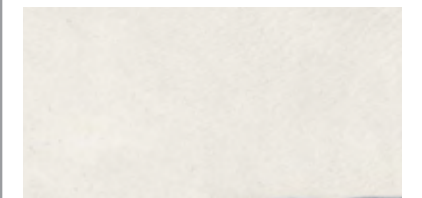
ASTRID

design Alessandro La Spada

chair
52x63 H.95 cm

Seat, back and piping upholstered in Nabuk Libeccio 24330/3452 Zinco. Rear back upholstered in leather Nabuk Libeccio 24330/3452 Zinco quilted in fans-motif. Legs in aluminium cast with satin Siena-lacquered finish.

Nabuk Libeccio 24330/3452 Zinco



Siena satinized steel



A D E L E
armchair

The Adele armchair comes from a "cocoon" concept where the external frame, made of armrests and backrest, embraces the internal part to guarantee the maximum comfort through the use of high quality materials.

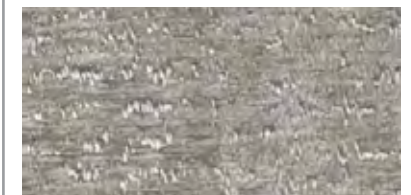


A D E L E
design Marco Piva

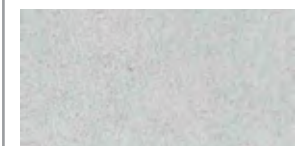
armchair
88x93 H.82 cm

Seat upholstered in fabric Nico 24227/06 Travertino. Rear back upholstered in leather Eco-Skin 24327/05 Silver with all-over embroidery, and dividing profile in aluminium, base in stainless steel with satin black nickel lacquered finish.

Nico 24227/06 Travertino



Eco-Skin 24327/05 Silver



Black nickel satinized steel





A D M E T O
low table

The Admeto table is made of a top in smoked glass set in three sculptural architectonic bases with an internal part made of two overlapped sheets of stainless steel, creating shiny strips alternated to satin, and with an external part in marble creating a sculptural column whose vertical face and the upper part are joined at 45° with vein continuity.

ADMETO
design Marco Piva

low table
Ø120 H.40 cm

Low table composed by 3 legs covered in marble Dover White and stainless steel decorated with bas-relief stripes finished with satin and polished Siena lacquer. Top in smoked crystal.



Dover White marble



Siena satinized steel



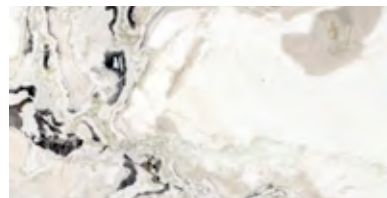
E K O S
design Alessandro La Spada

consolle
180x35 H.90 cm

Main structure covered in marble Dover White with concave shape. Internally covered in shaped steel with polished Siena-lacquered finish. Shaped top in smoked crystal.

E K O S
consolle

Dover White marble



Siena lacquered steel



HAMILTON

high unit



HAMILTON

design Alessandro La Spada

high unit
250x50 H.94 cm

Concave sides and top in veneered wood with shiny Sicomore Frisé C.902 finish. Top and structure perimetral frame in steel with shiny Champagne lacquer finish. Internally equipped with shelves and drawers finished in matt RAL 7047 lacquer. Rear-back finished in matt RAL 7047 lacquer. Optional internal LED lightning.

Sicomore Frisé C.902



Champagne lacquered steel





REBEL
design Alessandro La Spada

chandelier
66x61 H.157 cm

Lampshades with different sizes in marble Dover White, backlit with LED lights. Main structure with arms in metal finished with polished Siena lacquer

Dover White marble



Siena laquered steel

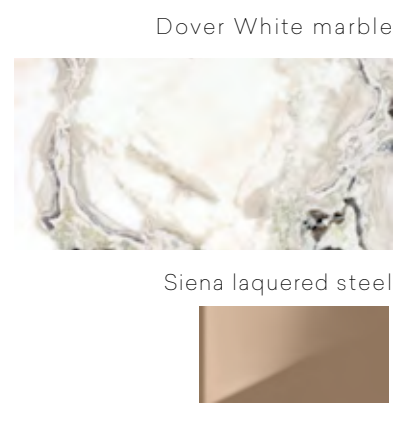


REBEL
lightings

CALLIA

lightings

Lamp entirely made of steel and with a botanic shape where a luminous pistil (provided with a high-energy LED COD light source) lightens the interior of the leaf obtained from a thin cold-finished layer of stainless steel, with shiny surface with "liquid metal" effect, internally satin with anti-glare surface. The composition is enriched by a decorative frieze in lightened marble.



CALLIA

design Alessandro La Spada

wall lamp
29x41 H.60 cm

Lamp in stainless steel with leaf-shaped lampshade, internal surface with satin finish and externally finished with polished Siena lacquer. Decorative element in marble Dover White.

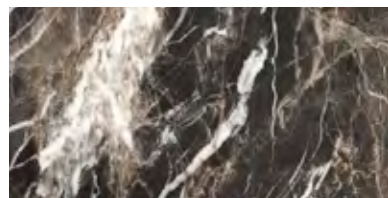




Dover White marble



Caffè Amaro marble



Siena lacquered steel



CALLIA
design Alessandro La Spada

floor lamp
44x43 H.179 cm

Lamp in stainless steel with three stems and leaves-shaped lampshades, internal surface with satin finish and externally finished with polished Siena lacquer. Large decorative element in marble Caffè Amaro. Medium decorative element in marble Dover White. Small decorative element in Ivory Onyx.



CALLIA
design Alessandro La Spada

table lamp
27x21 H.60 cm

Lamp in stainless steel with leaf-shaped lampshade, internal surface with satin finish and externally finished with polished Siena lacquer. Decorative element in marble Dover white.

SELDON
design La Conca

carpet
280x430 cm

Hand-tufted carpet in bamboo silk and New Zealand wool decorated with hand carving. Backing in cotton.



SELDON
carpet

Carpet with a unique design characterised by soft thick surface in bamboo silk and a marble-effect HD graphic, displaying a large scale of colour shades. Inserts in New Zealand wool emphasise the precision of the decorative motif. The irregular profile stresses the naturality of the product.

GREEN DREAM
art work



GREEN DREAM
design Michele Astolfi

art work
180x120 cm

Plexiglass with Murano mosaic glass processing.

01. ARKADY

Tavolo da pranzo 280x150 H.75 cm. Gambe in fusione di alluminio e acciaio in finitura Siena satinato con finitura martellata. Top ellittico in vetro temperato extrachiaro. Sottotop in marmo lavorato e decorato a mano con inserto artistico realizzato con pigmenti e minerali naturali.

Dining table 280x150 H.75 cm. Legs in cast of aluminium and steel with hammered satin Siena-lacquered finish. Elliptic top in tempered extra-clear glass. Hand-made under-top in marble with artistic insert consisting of natural pigments and minerals.

02. ASTRID

Sedia 52x63 H.95 cm. Rivestimento seduta, schienale e filetti in pelle Nabuk Libeccio 24330/3452 Zinco. Retro in pelle Nabuk Libeccio 24330/3452 Zinco trapuntato con disegno a ventagli. Gambe in fusione di alluminio in finitura Siena satinato.

Chair 52x63 h.95 cm. Seat, back and piping upholstered in Nabuk Libeccio 24330/3452 Zinco. Rear back upholstered in leather Nabuk Libeccio 24330/3452 Zinco quilted in fans-motif. Legs in aluminium cast with satin Siena-lacquered finish.

03. ADELE

Poltrona 88x93 H.82 cm. Rivestimento seduta in tessuto Nico 24227/06 Travertino. Rivestimento retro scocca in pelle Eco-Skin 24327/05 Silver con ricamo in allover, e profilo di separazione in alluminio, base in acciaio inox in finitura Black nickel satinato. Cuscino volante cm.45x60 rivestito in tessuto Nico 24227/06 Travertino.

Armchair 88x93 H.82 cm. Seat upholstered in fabric Nico 24227/06 Travertino. Rear back upholstered in leather Eco-Skin 24327/05 Silver with all-over embroidery, and dividing profile in aluminium, base in stainless steel with satin black nickel lacquered finish.

04. ADMETO

Tavolo basso Ø120 H.40 cm. Tavolo basso composto da tre gambe rivestite in marmo Dover White e acciaio inox con lavorazione rigata in bassorilievo in finitura Siena, lucida e satinata. Top in cristallo fumé.

Low table Ø120 H.40 cm. Low table composed by 3 legs covered in marble Dover White and stainless steel decorated with bas-relief stripes finished with satin and polished Siena lacquer. Top in smoked crystal.

05. EKOS

Consolle 180x35 H.90 cm. Struttura principale rivestita in marmo Dover White a forma concava. Parte interna in acciaio curvato in finitura Siena lucido. Top superiore sagomato in cristallo fumé.

Console 180x35 H.90 cm. Main structure covered in marble Dover White with concave shape. Internally covered in shaped steel with polished Siena-lacquered finish. Shaped top in smoked crystal.

06. HAMILTON

Madia 250x50 H.94. Fianchi concavi e top in essenza C.902 Sicomore Frisé lucido. Cornice top e montanti interni in acciaio Champagne lucido. Interno, ripiani e cassetti laccati RAL 7047 opaco. Retro laccato RAL 7047 opaco. Illuminazione interna a LED opzionale.

High unit 250x50 H.94 cm. Concave sides and top in veneered wood with shiny Sicomore Frisé C.902 finish. Top and structure perimetral frame in steel with shiny Champagne lacquer finish. Internally equipped with shelves and drawers finished in matt RAL 7047 lacquer. Rear-back finished in matt RAL 7047 lacquer. Optional internal LED lightning.

07. REBEL

Lampadario 66x61 H.157 cm. Elementi diffusori di varia misura in marmo Dover White retroilluminati a LED. Struttura principale metallica a bracci in finitura Siena lucido.

Chandelier 66x61 H.157 cm. Lampshades with different sizes in marble Dover White, backlit with LED lights. Main structure with arms in metal finished with polished Siena lacquer.

08. CALLIA

Applique 29x41 H.60 cm. Lampada in acciaio inox con diffusore a forma di foglia, con superficie interna satinata ed esterna lucida in finitura Siena. Elemento decorativo in marmo Dover White.

Wall lamp 29x41 H.60 cm. Lamp in stainless steel with leaf-shaped lampshade, internal surface with satin finish and externally finished with polished Siena lacquer. Decorative element in marble Dover White.

09. SELDON

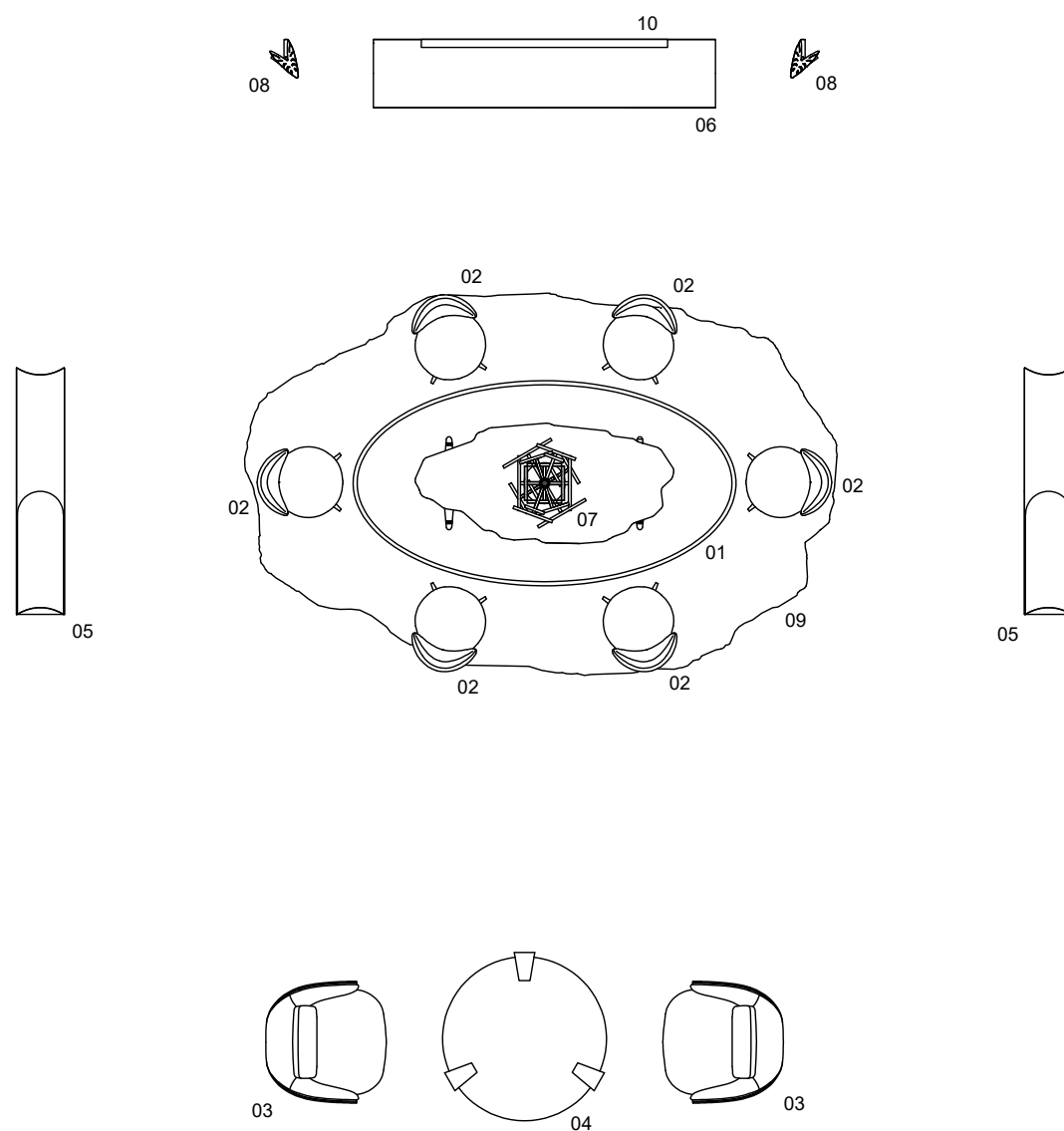
Tappeto 280x430 cm. Tappeto in bamboo silk, taftato a mano in bamboosilk e lana New Zealand con lavorazione carving manuale. Backing in cotone.

Carpet 280x430 cm. Hand-tufted carpet in bamboo silk and New Zealand wool decorated with hand carving. Backing in cotton.

10. GREEN DREAM

Art work 180x120 cm. Opera su fondo in plexi beige con lavorazione in mosaico di vetro di Murano.

Art work 180x120 cm. Plexiglass with Murano mosaic glass processing.



Produced by
©IPE SRL
ALL RIGHTS RESERVED

*Visionnaire Logo, catalogue and advertising images are sole propriety of IPE srl, henceforth any use of the logo or adaptation of images is strictly forbidden without IPE srl prior approval; nonetheless, in any case the images must be used in such a way that there is no reasonable doubt that those belong to IPE srl and refer to IPE srl products.
No part of this publication can be reproduced or transmitted in any form or by any means, both electronic or mechanical, including photocopying and recording, or via any information storage and retrieval system, without written permission of the publisher.*

Art Director: Eleonore Cavalli



Tutti i colori dei rivestimenti, pelli e tessuti, delle lacche, dei vetri, dei marmi e dei tappeti non possono essere considerati come riferimento colore. Le misure dei prodotti possono subire delle modifiche rispetto alle indicazioni del catalogo.

All colors of leather or fabric's covers, lacquered wood, mirrors, marbles and carpets can't be considered as color references. The dimensions of products are subject to change according to the instructions of the catalog.

I.P.E. S.r.l.
Via Mattei 1 — 40069 Zola Predosa (Bo) Italy
tel. +39 051 6186311 — fax +39 051 6186310
www.ipe-cavalli.it
www.visionnaire-home.it
ipe@ipe.it



